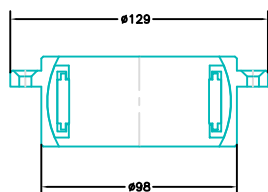
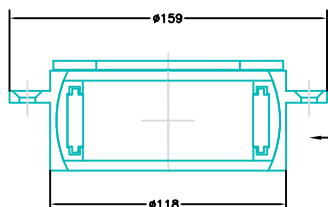


70mm Top bearing for boats build before 1/3-2002  
these boats are not build with a Jefa bearing from the start



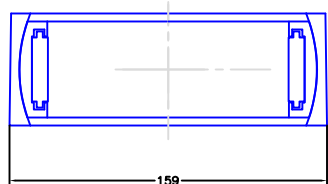
LS2201648  
Top bearing  
 $\varnothing 70\text{mm}$

85mm Top bearing for boats build after 1/3-2002



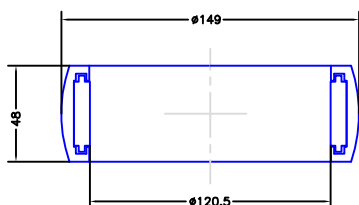
LS2201636  
Top bearing  
 $\varnothing 85\text{mm}$

120,5mm Bottom bearing for boats build after 1/3-2002



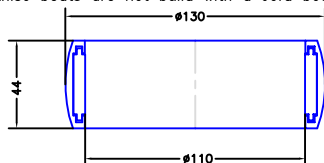
LS2201637  
Bottom bearing  
 $\varnothing 120,5\text{mm}$

120,5mm Bearing-ball for LS2201637



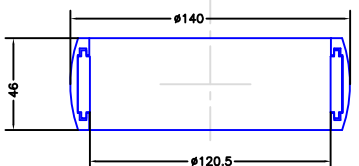
LS2201637B  
Bottom bearing  
 $\varnothing 120,5\text{mm}$

110mm Bearing-ball for boat build before 1/3-2002  
these boats are not build with a Jefa bearing from the start



LS2201647  
Bottom bearing  
 $\varnothing 110\text{mm}$

120,5mm Bearing-ball for boat build before 1/3-2002  
these boats are not build with a Jefa bearing from the start



LS2201640  
Bottom bearing  
 $\varnothing 120,5\text{mm}$

item no	Rudder bearings, part list	Quantity
	Boat build after 1/3-2002	
LS2201636	Top bearing, $\varnothing 85\text{mm}$	1
LS2201637	Bottom bearing, $\varnothing 120,5\text{mm}$	1

item no	Spare part list:	Quantity
	Top bearing LS2201648:	
LS2201648B	Bearing ball $\varnothing 70 \times \varnothing 92\text{mm}$	1
	Top bearing LS2201636:	
LS2201636B	Bearing ball $\varnothing 85 \times \varnothing 112\text{mm}$	1
M07-148	Washer $\varnothing 72 \times \varnothing 115 \times 4,5\text{mm}$ , Delrin	1
	Bottom bearing LS2201637:	
LS2201637B	Bearing ball $\varnothing 120,5 \times 149\text{mm}$	1
LS2201647	Bearing ball $\varnothing 110 \times 130\text{mm}$	1
LS2201640	Bearing ball $\varnothing 120,5 \times 140\text{mm}$	1

Modify date	Project: Beneteau First 36,7	
Modify date	Rudder bearing spareparts	
Modify date	Scale 1:4	Date 2009-03-24
Modify date	Material —	Drawing no. —
Modify date	Filename (dwg) —	
Modify date	Drawn by J.F.	—

*Jefa Rudder*  
S Y S T E M S

JEFA MARINE A/S  
NIMBUSVEJ 2  
2670 GREVE, DENMARK  
Tlf. +45-4615 5210 & Fax +45-4615 5208  
E-mail info@jefa.com & WWW.jefa.com