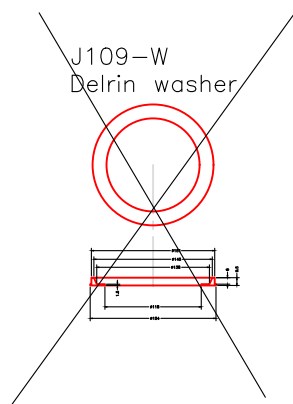
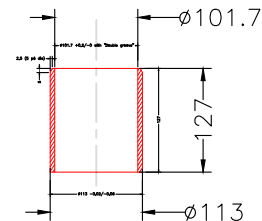


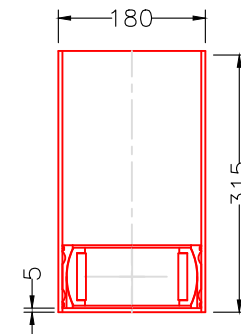
- 1pcs 6T113180 GRP bearing 113mm
- 1pcs J109-BS Sleeve  $\phi 113 \times \phi 101,7 \times 127$ mm, Aisi316
- ~~1pcs J109-W Delrin washer~~
- 1pcs GA180076 Gaiter 179 x76mm
- 1pcs 7T30 Top bearing 3" (76,2mm)
- 1pcs J109-TS Sleeve  $\phi 76,2 \times \phi 70 \times 305$ mm, Alu6082
- 2pcs J109-WB Washer with ballrace 77mm
- 2pcs 46-in3 Top/Lock ring 3" (76,2mm)



J109-BS  
Sleeve, Aisi316



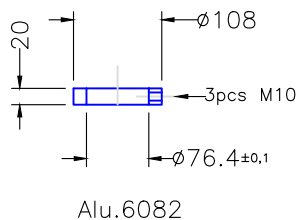
6T113180  
GRP bearing 113mm



Incl. standard 113mm washer

46-in3  
Top/Lock ring 3"  
(76,2mm)

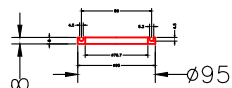
M57-650



Alu.6082

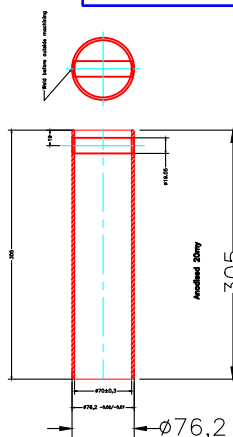
J109-WB  
Washer with ballrace  
Delrin

M08-077B

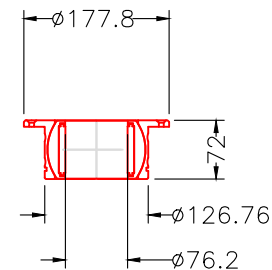


J109-TS  
Sleeve  
 $\phi 76,2 \times \phi 70 \times 305$ mm  
Alu6082

M74-410

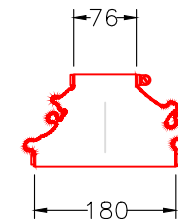


7T30  
Top bearing 3" (76,2mm)



M13-217  
M71-240

GA180076  
Gaiter 180 x76mm



Modify date: 10/5-2010/EZ  
6GB113 replaced by 6T113180 + gaiter size changed  
Modify date

Project: J-109 Rudder bearings

Modify date

Scale 1:10

Date 2004-11-20

Modify date

Material Alu6082

Drawing no. -

Modify date

Filename (dwg) J109 main drawing

Modify date

Drawn by J.F.

*Jefa Rudder*  
SYSTEMS

JEFA MARINE A/S  
NIMBUSVEJ 2  
2670 GREVE, DENMARK  
Tlf.+45-4615 5210 & Fax +45-4615 5208  
E-mail info@jefa.com & WWW.jefa.com