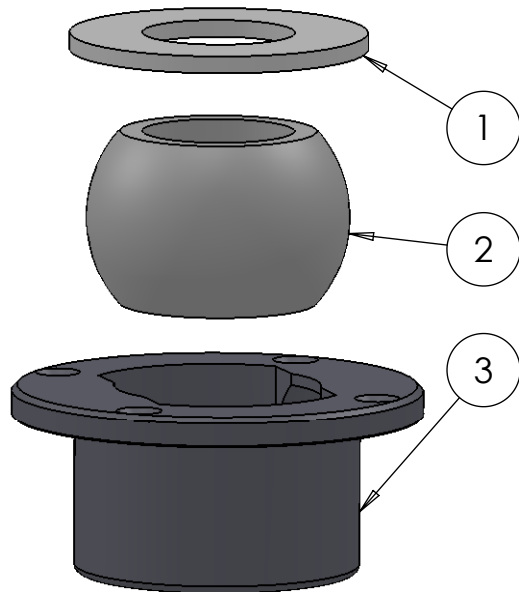


SECTION A-A
SCALE 1 : 1



ITEM NO.	PART NUMBER	PART NAME	Default/ QTY.
1	M07-107	Washer $\phi 40.5 \times \phi 79$	1
2	M13-112-40	Ball with rollers for 5T040	1
3	M51-085	House for 5T035-5T040	1

DWG NR / NAME: **5T040 / S-A top Roller bearing $\phi 40$ mm**

PROJECT: Shaft $\phi 40$ mm, max working load 1000 kg

DATE: 08-12-2010 NAME: JR SCALE / PAPER: 1:2/ A4 MATERIAL: WEIGHT: g

MODIFY DATE: : /

BATCH NR:

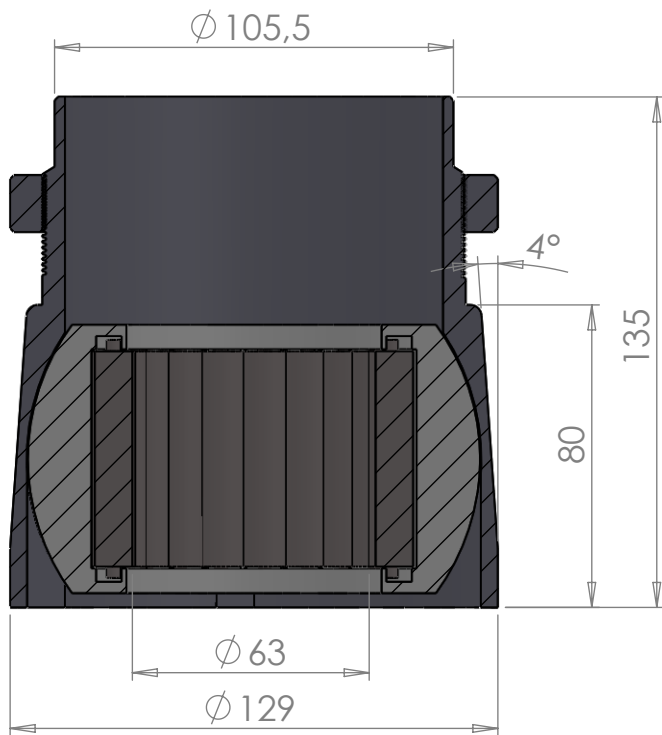
REKV.NR / ORDRE NR:

ORDRE DATO:

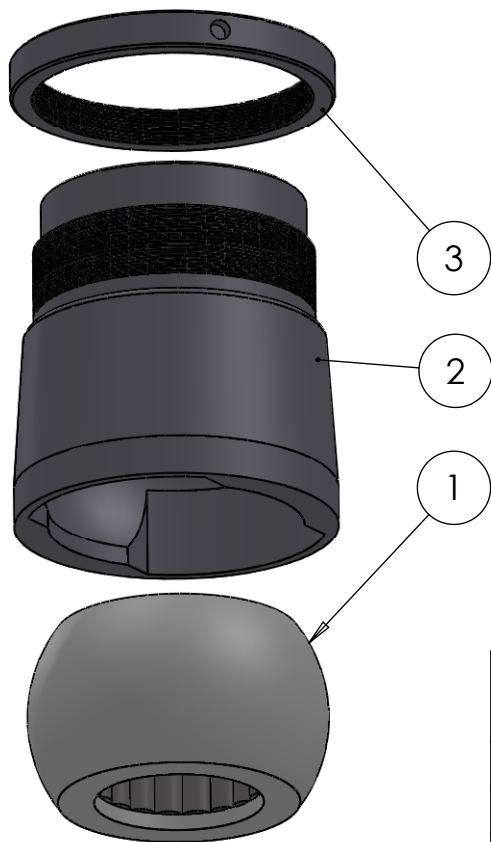
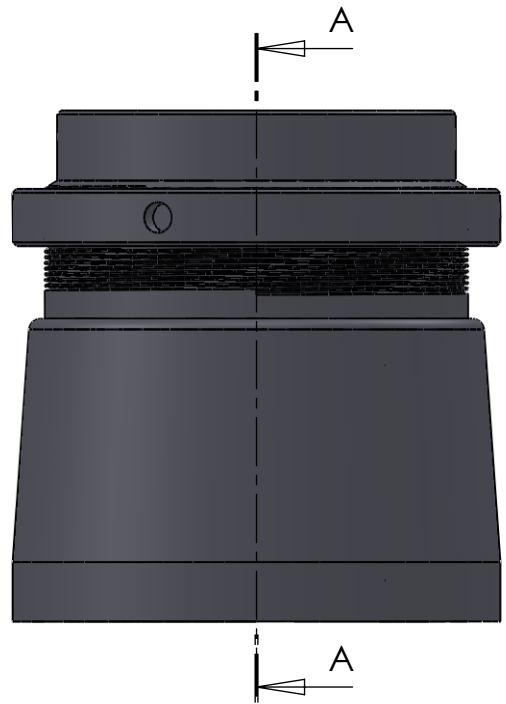
LEV.DATO:

Jefa Rudder
SYSTEMS

JEFA MARINE A/S
NIMBUSVEJ 2
2670 GREVE. DENMARK
Tlf: +45 4615 5210 & Fax: +45 46155208
Email: info@jefa.com www.jefa.com



SECTION A-A
SCALE 1 : 2



ITEM NO.	PART NUMBER	PART NAME	QTY.
1	M13-214-63	Ball with Rollers for 5BT063	1
2	M53-110	House for 5BT061-5BT082	1
3	M54-110	Nut M112x2	1

DWG NR / NAME:

5BT063 / Conical SA lower roller bearing

PROJECT:

For $\phi 63$ mm shaft, max working load 3400kg

DATE:
29.09.2011

NAME:
JR

SCALE / PAPER:
1:3 / A4

MATERIAL:
WEIGHT: g

LOCATION:
REV:

BATCH NR:

REKV.NR / ORDRE NR:

ORDRE DATO:

LEV.DATO:

Jefa Rudder
S Y S T E M S

JEFA MARINE A/S
NIMBUSVEJ 2
2670 GREVE, DENMARK

Tlf: +45 4615 5210 & Fax: +45 46155208
Email: info@jefa.com www.jefa.com

: /