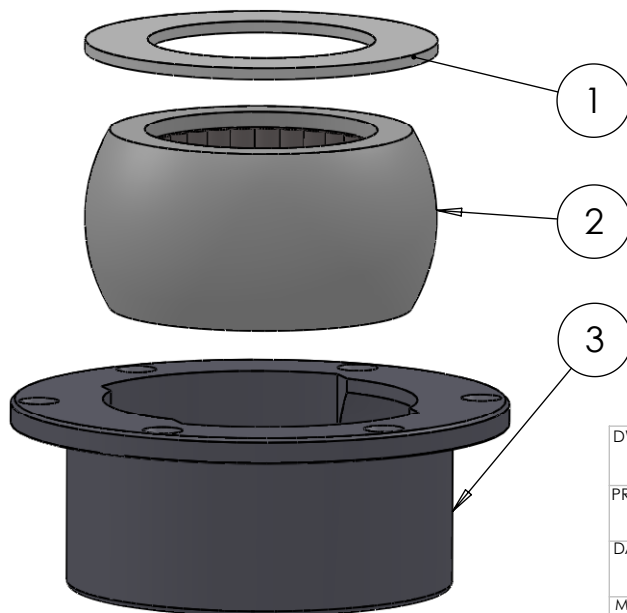
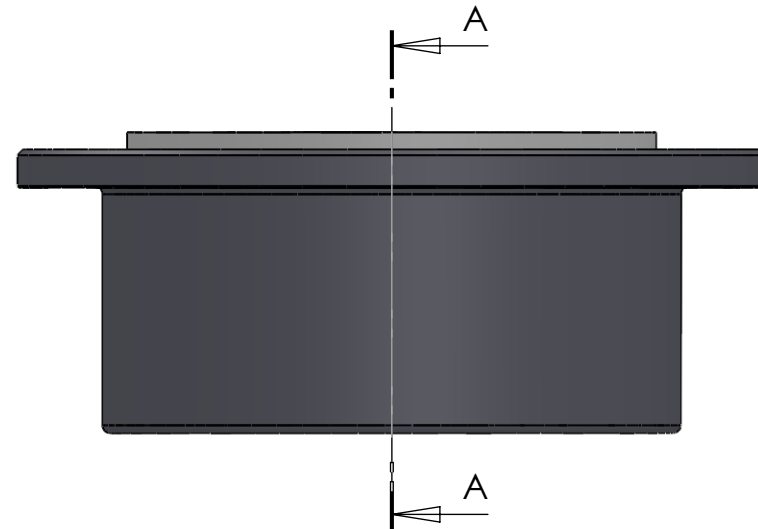


SECTION A-A
SCALE 1 : 2



ITEM NO.	PART NUMBER	PART NAME	Default/ QTY.
1	M07-173	Washer $\varnothing 90.5 \varnothing 140$	1
2	M13-280-90	Ball with Rollers for 5T090	1
3	M51-130	House for 5T083-5T104	1

DWG NR / NAME: **5T090 / S-A top Roller bearing $\varnothing 90\text{mm}$**

PROJECT: Shaft $\varnothing 90\text{mm}$, max working load 5200 kg

DATE: 07-01-2011

NAME: JR

SCALE / PAPER: 1:3/ A4

MATERIAL: WEIGHT: g

LOCATION:

BATCH NR:

REKV.NR / ORDRE NR:

ORDRE DATO:

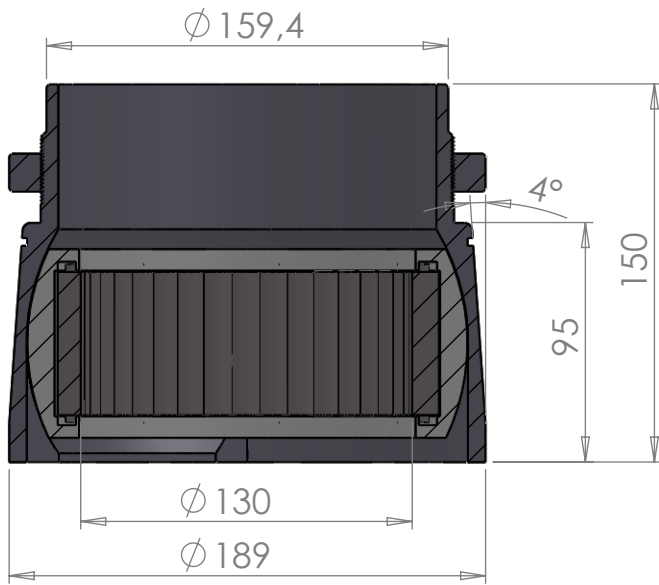
LEV.DATO:

Jefa Rudder
SYSTEMS

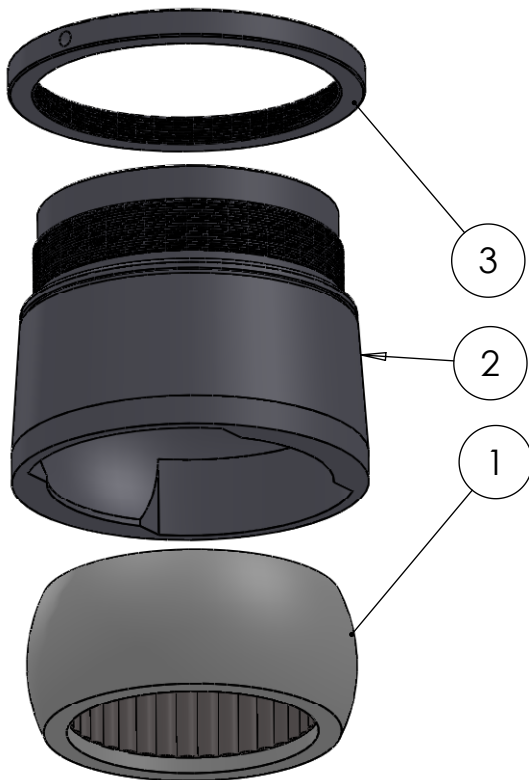
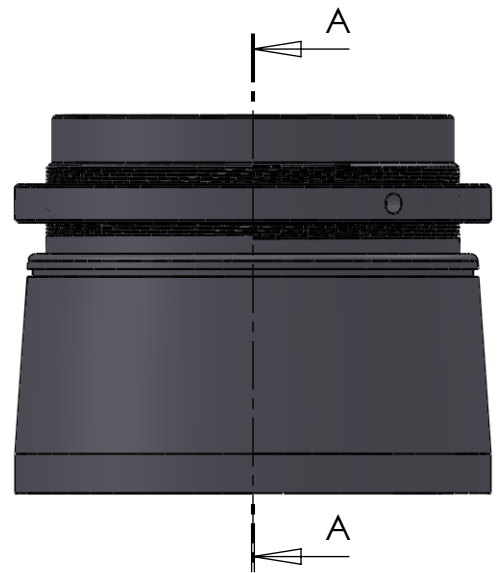
JEFA MARINE A/S
NIMBUSVEJ 2
2670 GREVE, DENMARK

Tlf: +45 4615 5210 & Fax: +45 46155208
Email: info@jefa.com www.jefa.com

MODIFY DATE: : /



SECTION A-A
SCALE 1 : 3



ITEM NO.	PART NUMBER	PART NAME	QTY.
1	M13-510-130	Ball with rollers for 5BT130	1
2	M53-120	House for 5BT116-5BT140	1
3	M54-120	Nut M164x2	1

DWG NR / NAME:

5BT130 / Conical SA lower roller bearing

PROJECT:

For ø130mm shaft, max working load 6600 kg

DATE:
29.09.2011

NAME:
JR

SCALE / PAPER:
1:4 / A4

MATERIAL:
WEIGHT: g

LOCATION:

BATCH NR:

REKV.NR / ORDRE NR:

ORDRE DATO:

LEV.DATO:

Jefa Rudder
SYSTEMS

JEFA MARINE A/S
NIMBUSVEJ 2
2670 GREVE. DENMARK

Tlf: +45 4615 5210 & Fax: +45 46155208
Email: info@jefa.com www.jefa.com

MODIFY DATE:

: /