

A

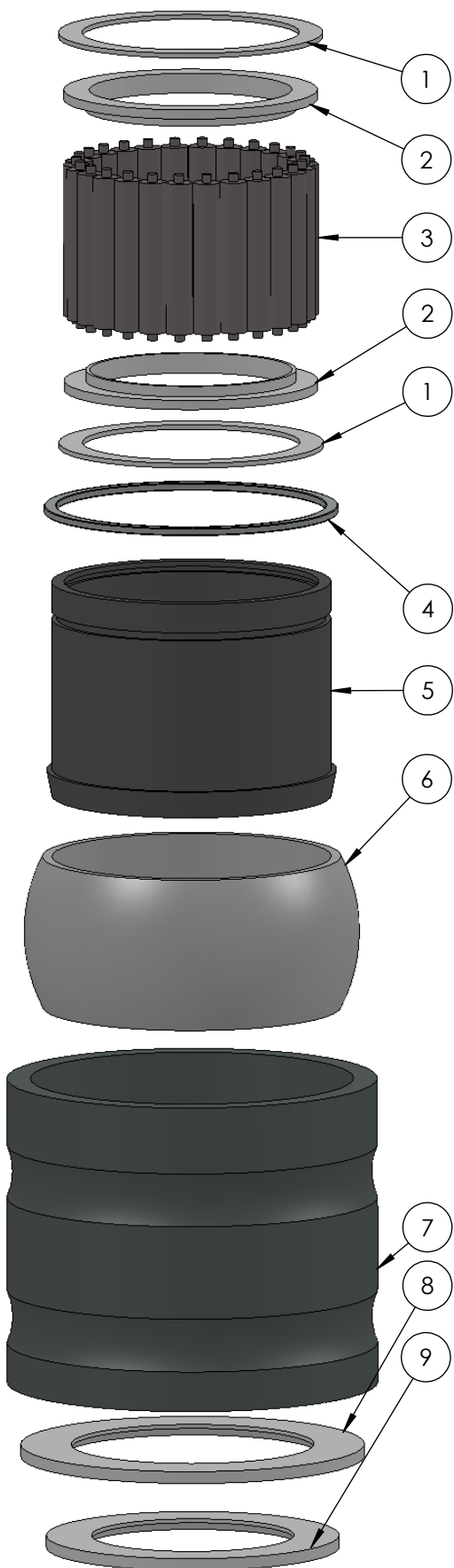
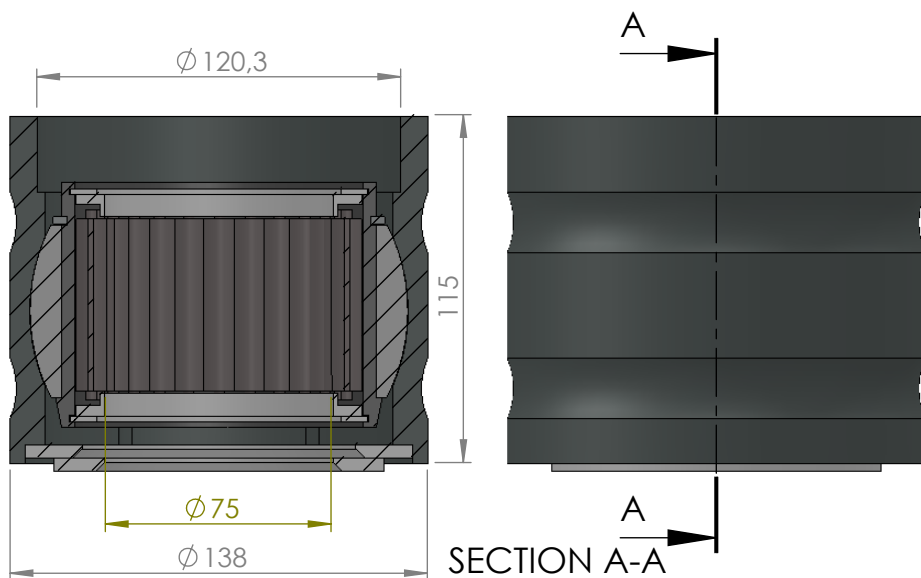
B

C

D

E

F



ITEM NO.	PART NUMBER	PART NAME	QTY.
1	M03-213	Delrin Lockring $\varnothing 98,5 \times \varnothing 81 \times 1,75\text{mm}$	2
2	M05-182	L-ring $\varnothing 75 \varnothing 78.5 \varnothing 95$	2
3	M01-332	Roller $\varnothing 10.0 \times 57\text{mm}$	26
4	M09-105	Alu lockring $\varnothing 100,5 \times \varnothing 109,5$	1
5	M27-115	Inderhus for 43070-43079	1
6	M15-110	Ball for 43061-43079	1
7	M25-105	Yderhus for 43061-43079	1
8	M07-173	Washer $\varnothing 90.5 \varnothing 128$	1
9	M07-152	Washer $\varnothing 75.5 \varnothing 109$	1

DWG NR / NAME:

43075 / Self-aligning roller bearing

BATCH NR:

PROJECT:

Shaft $\varnothing 75\text{mm}$, max working load 5100kg

REKV.NR / ORDRE NR:

DATE:

25-01-2010

NAME:

JR

SCALE / PAPER:

1:2.5 / A4

MATERIAL:

WEIGHT:

g

LOCATION:

REV:

ORDRE DATO:

LEV.DATO:

MODIFY DATE:

: /

Jefa Rudder
SYSTEMS

JEFA MARINE A/S
NIMBUSVEJ 2
2670 GREVE, DENMARK

Tlf: +45 4615 5210 & Fax: +45 4615 5208
Email: info@jefa.com www.jefa.com