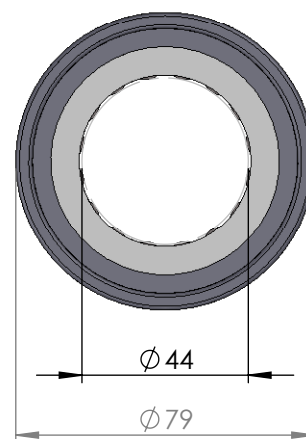
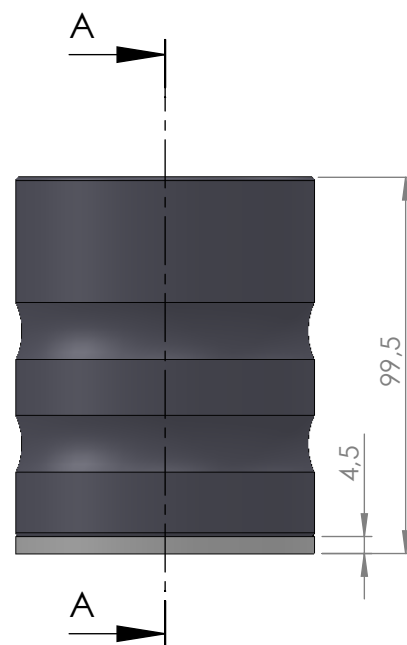


SECTION A-A



ITEM NO.	PART NUMBER	PART NAME	EXPL /QTY
1	M01-240	Roller $\varnothing 10.5 \times 44\text{mm}$	16
2	M03-195	Lockring $\varnothing 51 \times \varnothing 69$	1
3	M05-119	L-ring $\varnothing 45 \times \varnothing 65$	2
4	M07-110	Washer $\varnothing 45.5 \times \varnothing 79$	1
5	M21-103	Rollerbearing $\varnothing 40 - \varnothing 49\text{mm}$	1

DWG NR / NAME:

41044 / Lower roller bearing

BATCH NR:

PROJECT:

Shaft $\varnothing 44\text{mm}$, Max working load 2500kg

REKV.NR / ORDRE NR:

DATE:

09-06-2009

NAME:

JR

SCALE / PAPER:

1:2 / A4

MATERIAL:

WEIGHT:

g

LOCATION:

ORDRE DATO:

MODIFY DATE:

: /

REV:

LEV.DATO:

Jefa Rudder
SYSTEMS

JEFA MARINE A/S
NIMBUSVEJ 2
2670 GREVE, DENMARK

Tlf: +45 4615 5210 & Fax: +45 46155208
Email: info@jefa.com www.jefa.com