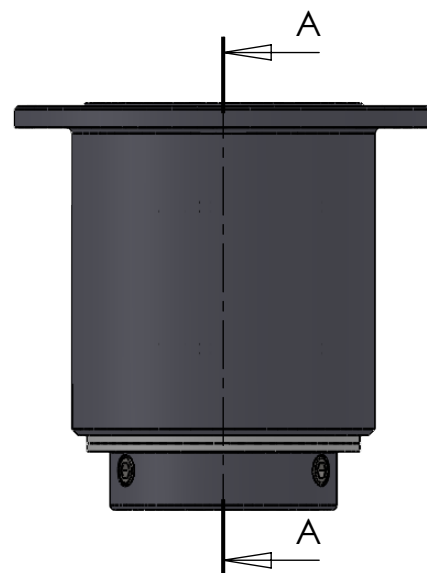


SECTION A-A  
SCALE 1 : 2.5



ITEM NO.	PART NUMBER	PART NAME	QTY.
1	DIN916-10x10	Socket set Screw M10x10mm	3
2	M01-272	Roller $\varnothing 12.5 \times 44$ mm	18
3	M03-207	Delrin Lockring $\varnothing 88,5 \times \varnothing 71 \times 1,75$ mm	2
4	M03-615	Delrin Lockring $\varnothing 90 \times \varnothing 75,7 \times 2,75$ mm	1
5	M03-620	Delrin Lockring $\varnothing 90 \times \varnothing 71 \times 2,75$	1
6	M05-158	L-ring $\varnothing 60 \varnothing 63.5 \varnothing 85$	2
7	M36-060	Outer house 42060Z	1
8	M39-060	Hanger $\varnothing 60$	1
9	M41-510	5mm delrin ball	50
10	M43-088	Cover with M88	1
11	O-ring	Rubber ring $\varnothing 80 \times 2.5$	1

DWG NR / NAME:

**42060Z / Top roller Bearing**

BATCH NR:

PROJECT:

Shaft  $\varnothing 60$ mm. Max working load 3000kg

REKV.NR / ORDRE NR:

DATE:

06-12-2010

NAME:

JR

SCALE / PAPER:

1:3 / A4

MATERIAL:

WEIGHT:

g

LOCATION:

REV:

ORDRE DATO:

LEV.DATO:

MODIFY DATE:

: /

*Jefa Rudder*  
S Y S T E M S

JEFA MARINE A/S  
NIMBUSVEJ 2  
2670 GREVE, DENMARK

Tlf: +45 4615 5210 & Fax: +45 4615208  
Email: info@jefa.com www.jefa.com