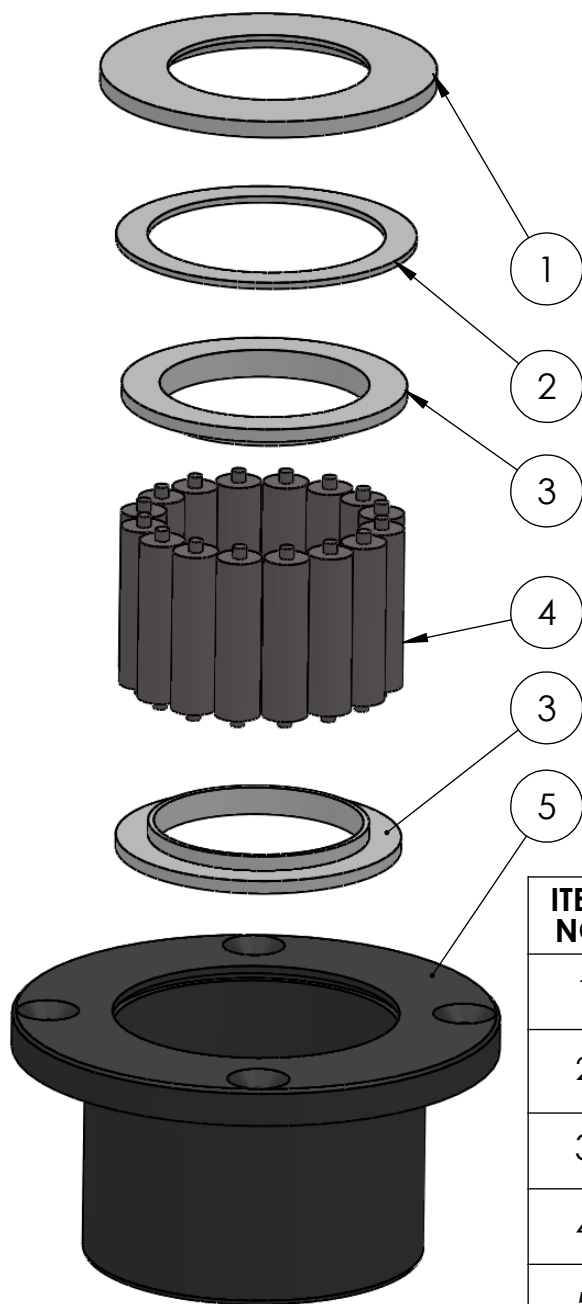
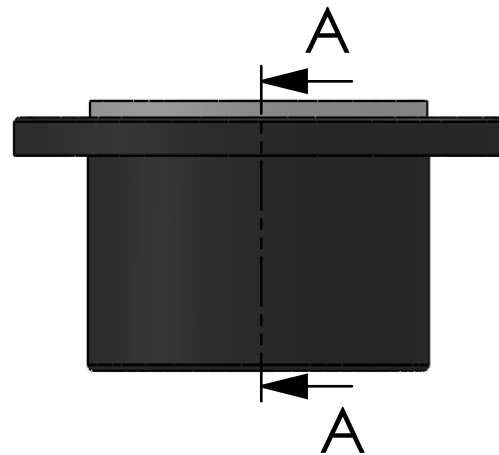


SECTION A-A
SCALE 1 : 2



ITEM NO.	PART NUMBER	PART NAME	QTY.
1	M07-119	Washer $\varnothing 53.5$ $\varnothing 89$	1
2	M03-203	Delrin Lockring $\varnothing 79,5$ x $\varnothing 63$ x 1,75mm	1
3	M05-143	L-ring $\varnothing 55$ x $\varnothing 58.5$ $\varnothing 76$	2
4	M01-264	Roller $\varnothing 12$ x 44mm	16
5	M23-125	Top roller bearing $\varnothing 50$ - $\varnothing 60$	1

DWG NR / NAME:

42052 / Top roller bearing

BATCH NR:

PROJECT:

Shaft $\varnothing 52$ mm, max working load 3000kg

REKV.NR / ORDRE NR:

DATE:

25-05-2009

NAME:

JR

SCALE / PAPER:

1:2 / A4

MATERIAL:

WEIGHT:

g

LOCATION:

REV:

ORDRE DATO:

LEV.DATO:

MODIFY DATE:

: /

Jefa Rudder
SYSTEMS

JEFA MARINE A/S
NIMBUSVEJ 2
2670 GREVE, DENMARK

Tlf: +45 4615 5210 & Fax: +45 4615208
Email: info@jefa.com www.jefa.com