

A

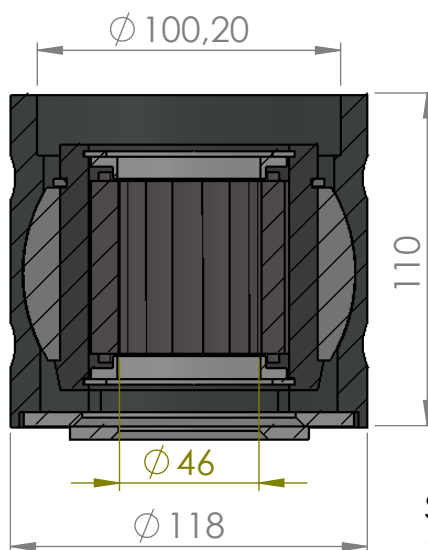
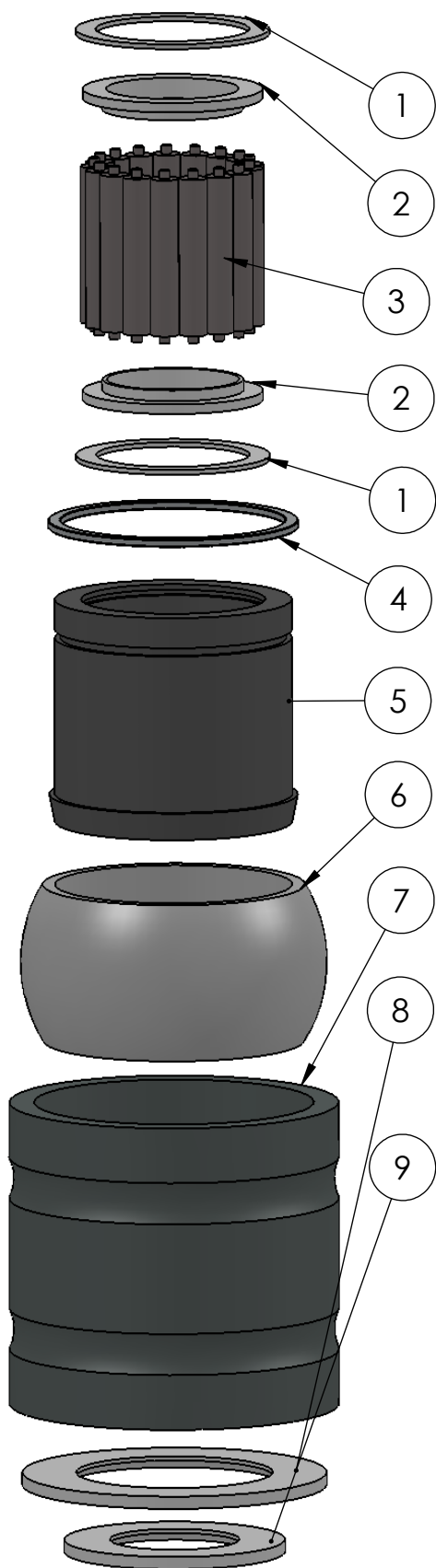
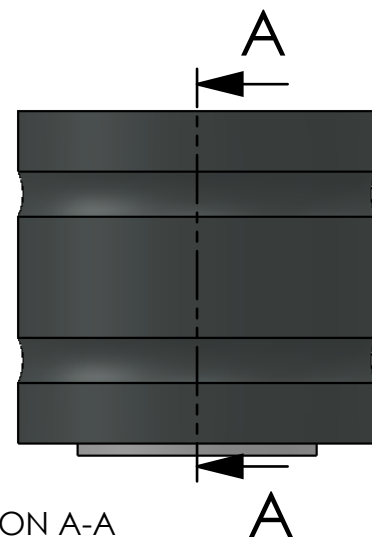
B

C

D

E

F

SECTION A-A  
SCALE 1 : 2.5

ITEM NO.	PART NUMBER	PART NAME	QTY.
1	M03-197	Delrin Lockring $\phi 69,5 \times \phi 55 \times 1,75\text{mm}$	2
2	M05-122	L-ring $\phi 47 \times \phi 50.5 \phi 65$	2
3	M01-332	Roller $\phi 10.0 \times 57\text{mm}$	17
4	M09-101	Alu lockring $\phi 80.5 \times \phi 89.5$	1
5	M27-101	Inderhus for 43040-43050	1
6	M15-101	Ball for 43040-43060	1
7	M25-101	Yderhus for 43040-43060	1
8	M07-146	Washer $\phi 70.5 \phi 109$	1
9	M07-111	Washer $\phi 46.5 \phi 79$	1

DWG NR / NAME:

**43046 / Self-aligning roller bearing**

BATCH NR:

PROJECT:

Shaft  $\phi 46\text{mm}$ , max working load 3400kg

REKV.NR / ORDRE NR:

DATE:

30.03.2016

NAME:

JR

SCALE / PAPER:

1:2,5 / A4

MATERIAL:

WEIGHT:

g

LOCATION:

REV:

ORDRE DATO:

LEV.DATO:

JEFA MARINE A/S  
NIMBUSVEJ 2  
2670 GREVE, DENMARK

Tlf: +45 4615 5210 & Fax: +45 46155208  
Email: info@jefa.com www.jefa.com

: /