

A

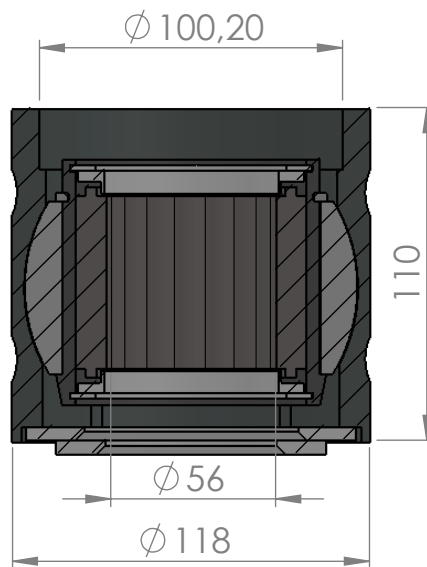
B

C

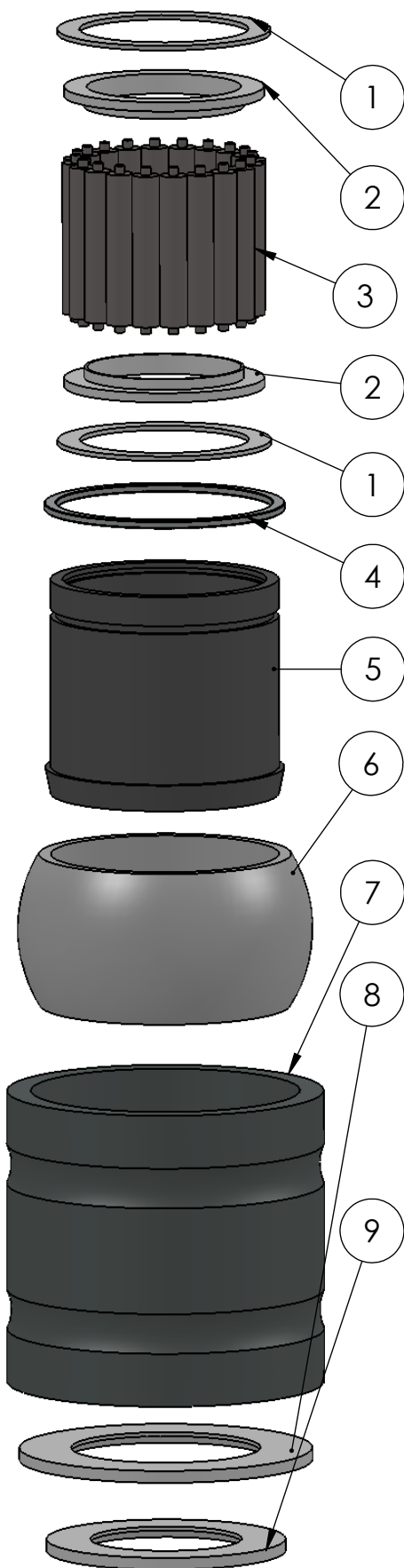
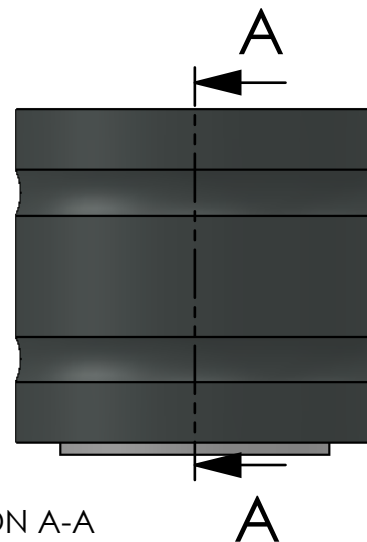
D

E

F



SECTION A-A
SCALE 1 : 2.5



ITEM NO.	PART NUMBER	PART NAME	QTY.
1	M03-203	Delrin Lockring $\phi 79,5 \times \phi 63 \times 1,75\text{mm}$	2
2	M05-146	L-ring $\phi 57 \times 59.5 \phi 75$	2
3	M01-332	Roller $\phi 10.0 \times 57\text{mm}$	20
4	M09-101	Alu lockring $\phi 80.5 \times \phi 89.5$	1
5	M27-105	Inderhus for 43050-43060	1
6	M15-101	Ball for 43040-43060	1
7	M25-101	Yderhus for 43040-43060	1
8	M07-146	Washer $\phi 70.5 \phi 109$	1
9	M07-124	Washer $\phi 56.5 \phi 89$	1

DWG NR / NAME:

43056 / Self-aligning roller bearing

BATCH NR:

PROJECT:

Shaft $\phi 56\text{mm}$, max working load 4000kg

REKV.NR / ORDRE NR:

DATE:

30.03.2016

NAME:

JR

SCALE / PAPER:

1:2,5 / A4

MATERIAL:

WEIGHT:

g

LOCATION:

REV:

ORDRE DATO:

LEV.DATO:

Jefa Rudder
SYSTEMS

JEFA MARINE A/S
NIMBUSVEJ 2
2670 GREVE, DENMARK

Tlf: +45 4615 5210 & Fax: +45 4615 5208
Email: info@jefa.com www.jefa.com

: /