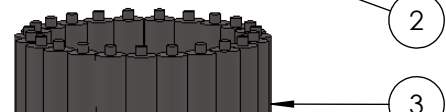


A



1

2

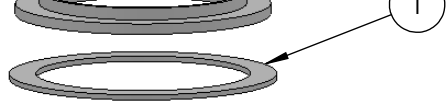


3

2



1



4



5



6



7



8



9



9



4



5



6



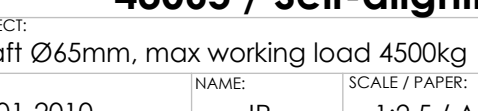
7



8



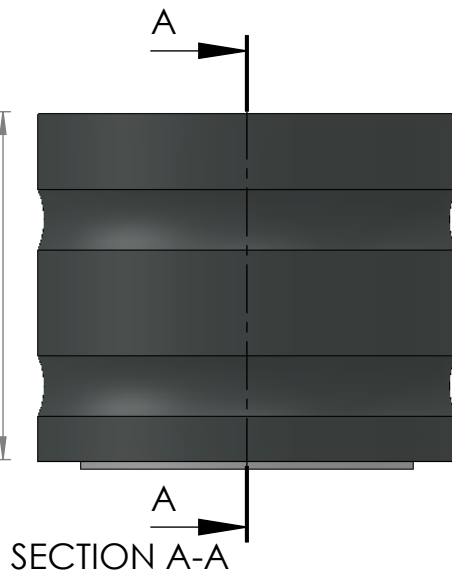
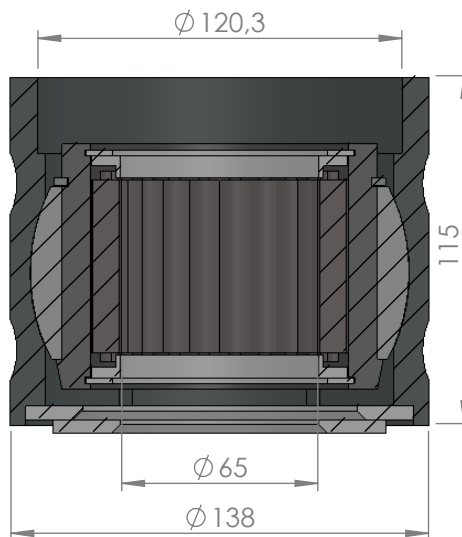
9



9



4



SECTION A-A

ITEM NO.	PART NUMBER	PART NAME	QTY.
1	M03-207	Delrin Lockring $\varnothing 88,5 \times \varnothing 71 \times 1,75\text{mm}$	2
2	M05-164	L-ring $\varnothing 65 \varnothing 68.5 \varnothing 85$	2
3	M01-332	Roller $\varnothing 10.0 \times 57\text{mm}$	23
4	M09-105	Alu lockring $\varnothing 100,5 \times \varnothing 109,5$	1
5	M27-110	Inderhus for 43060-43069	1
6	M15-110	Ball for 43061-43079	1
7	M25-105	Yderhus for 43061-43079	1
8	M07-173	Washer $\varnothing 90.5 \varnothing 128$	1
9	M07-132-C	Washer, delrin $\varnothing 65,5 \times \varnothing 110 \times 4,5\text{mm}$	1

DWG NR / NAME:

**43065 / Self-aligning roller bearing**

BATCH NR:

PROJECT:

Shaft  $\varnothing 65\text{mm}$ , max working load 4500kg

REKV.NR / ORDRE NR:

DATE:

25-01-2010

NAME:

JR

SCALE / PAPER:

1:2.5 / A4

MATERIAL:

WEIGHT:

g

LOCATION:

REV:

ORDRE DATO:

LEV.DATO:

*Jefa Rudder*  
SYSTEMS

JEFA MARINE A/S  
NIMBUSVEJ 2  
2670 GREVE, DENMARK

Tlf: +45 4615 5210 & Fax: +45 46155208  
Email: info@jefa.com www.jefa.com

: /