

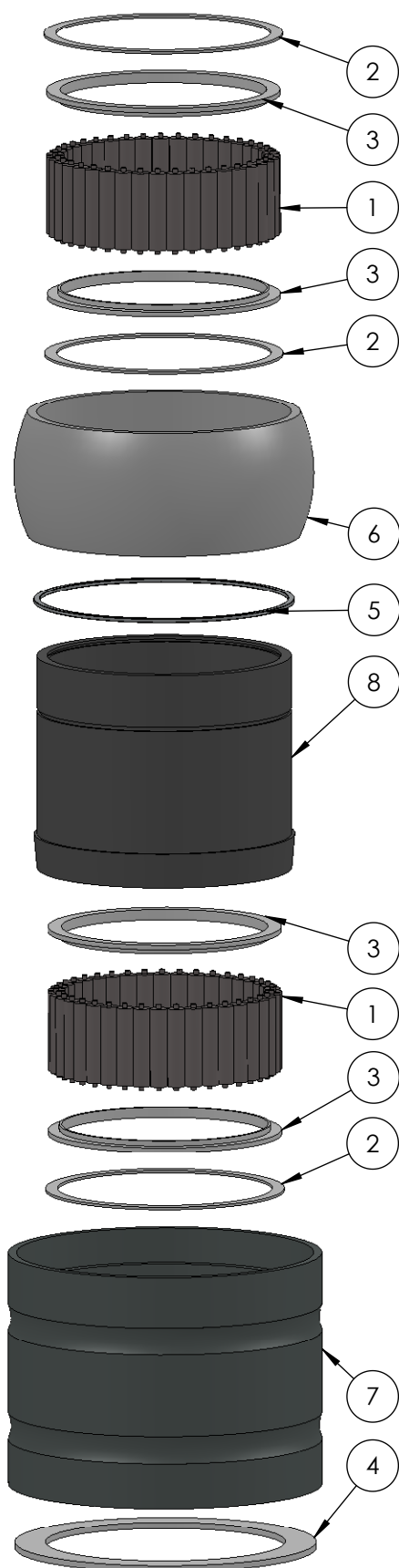
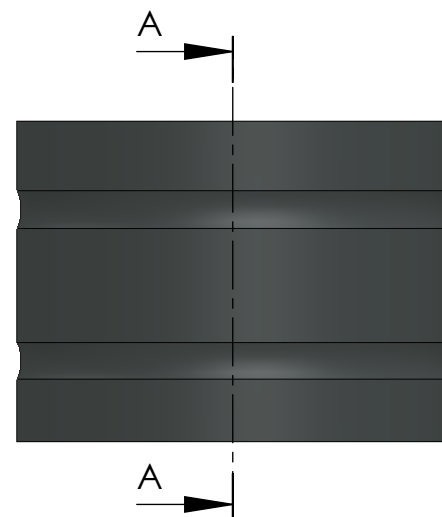
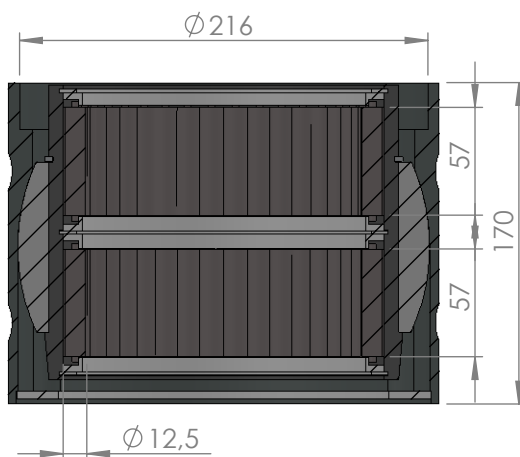
A

B

C

D

E



ITEM NO.	PART NUMBER	PART NAME	QTY.
1	M01-372	Roller $\varnothing 12.5 \times 57\text{mm}$	78
2	M03-310	Lockring $\varnothing 156 \varnothing 174$	3
3	M05-347	L-ring $\varnothing 150 \varnothing 153.5 \varnothing 170$	4
4	M07-242	Washer $\varnothing 174.5 \varnothing 219$	1
5	M09-125	Alu lockring $\varnothing 180.5 \times \varnothing 189.5$	1
6	M15-140	Ball for 43125-43160	1
7	M25-120	Yderhus for 43125-43154	1
8	M27-160	Inderhus for 43145-43154	1

DWG NR / NAME:

**43145 / Self-aligning roller bearing**

BATCH NR:

PROJECT:

Shaft  $\varnothing 145$  max working load 18200kg

REKV.NR / ORDRE NR:

DATE:

16-12-2009

NAME:

JR

SCALE / PAPER:

1:5 / A4

MATERIAL:

WEIGHT:

g

LOCATION:

REV:

ORDRE DATO:

LEV.DATO:

MODIFY DATE:

: /

*Jefa Rudder*  
SYSTEMS

JEFA MARINE A/S  
NIMBUSVEJ 2  
2670 GREVE, DENMARK

Tlf: +45 4615 5210 & Fax: +45 46155208  
Email: info@jefa.com www.jefa.com