

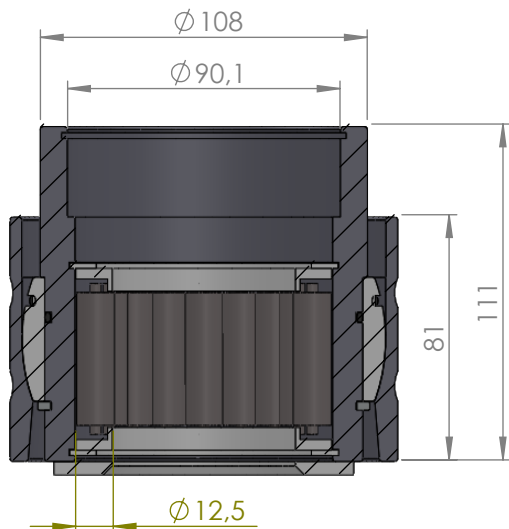
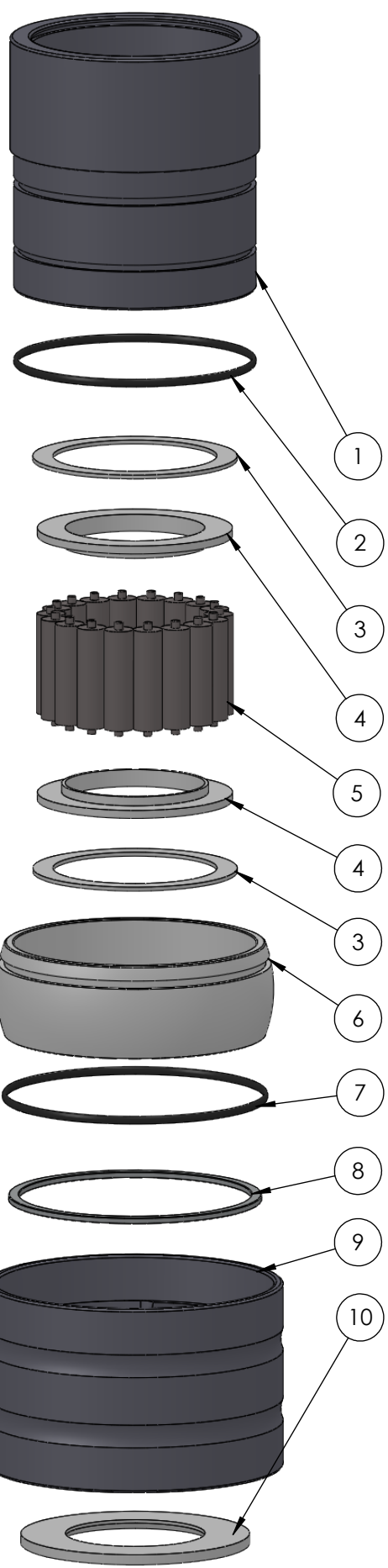
A

B

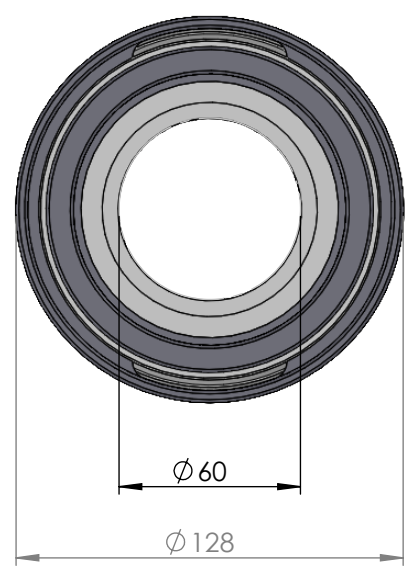
C

D

E



SECTION A-A  
SCALE 1 : 2.5



ITEM NO.	PART NUMBER	PART NAME	Expl /QTY
1	M35-105	Inner house 4S060-4S069	1
2	O-ring	$\varnothing 90 \times 2,5\text{mm}$	1
3	M03-207	Delrin Lockring $\varnothing 88,5 \times \varnothing 71 \times 1,75\text{mm}$	2
4	M05-158	L-ring $\varnothing 60 \varnothing 63.5 \varnothing 85$	2
5	M01-272	Roller $\varnothing 12.5 \times 44\text{mm}$	18
6	M11-103	Ball 4S060-4S079	1
7	O-ring	$\varnothing 100 \times 2.5$	1
8	M09-105	Alu lockring $\varnothing 100,5 \times \varnothing 109,5$	1
9	M31-106	Outer house 4S060-4S079	1
10	M07-131	Washer $\varnothing 60.5 \times \varnothing 99$	1

DWG NR / NAME:

### 4S060 / Self-aligning lower bearing

BATCH NR:

PROJECT:  
Shaft  $\varnothing 60\text{mm}$ , max working load 4200kg

REKV.NR / ORDRE NR:

DATE:  
27-08-2009

NAME:  
JR

SCALE / PAPER:  
1:3 / A4

MATERIAL:  
WEIGHT: g

LOCATION:

ORDRE DATO:

MODIFY DATE:  
: /

REV:

LEV.DATO:



JEFA MARINE A/S  
NIMBUSVEJ 2  
2670 GREVE. DENMARK

Tlf: +45 4615 5210 & Fax: +45 46155208  
Email: info@jefa.com www.jefa.com