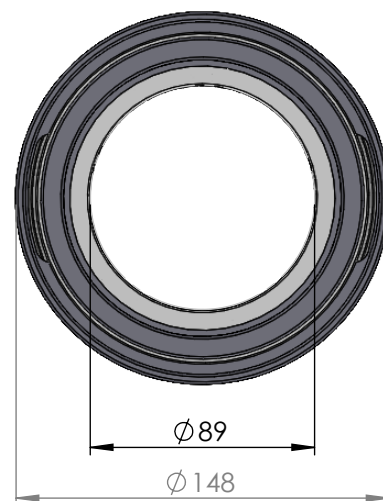
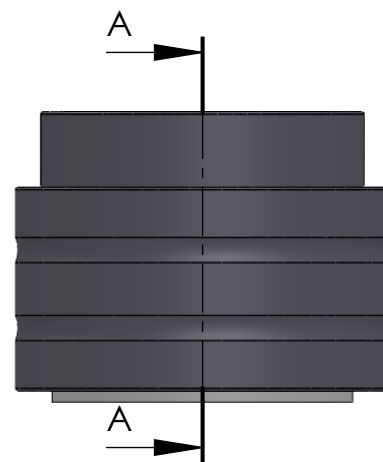


SECTION A-A



| ITEM NO. | PART NUMBER | PART NAME | Expl /QTY |
|----------|-------------|---------------------------------------|-----------|
| 1 | M35-109 | Inner house 4S080-4S089 | 1 |
| 2 | O-ring | ø115 x 2.5mm | 1 |
| 3 | M05-200 | L-ring, delrin ø89 x ø105 x 7,5mm | 2 |
| 4 | M01-301 | Roller ø8.0 x 57mm | 38 |
| 5 | M03-220 | Delrin Lockring ø108,5 x ø91 x 1,75mm | 2 |
| 6 | M11-105 | Ball 4S070-4S099 | 1 |
| 7 | O-ring | ø120 x 2.5mm | 1 |
| 8 | M09-110 | Alu lockring ø122.5 x ø131.5 | 1 |
| 9 | M31-111 | Outer house 4S080-4S099 | 1 |
| 10 | M07-170 | Washer, delrin ø89,5 x ø119 x 4,5mm | 1 |

DWG NR / NAME:

4S089 / Self-aligning lower bearing

BATCH NR:

PROJECT:

Shaft Ø89mm, max working load 5600kg

REKV.NR / ORDRE NR:

DATE:

27-08-2009

NAME:

JR

SCALE / PAPER:

1:3 / A4

MATERIAL:

WEIGHT:

g

LOCATION:

REV:

ORDRE DATO:

LEV.DATO:

Jefa Rudder
S Y S T E M S

JEFA MARINE A/S
NIMBUSVEJ 2
2670 GREVE, DENMARK

Tlf: +45 4615 5210 & Fax: +45 46155208
Email: info@jefa.com www.jefa.com

: /