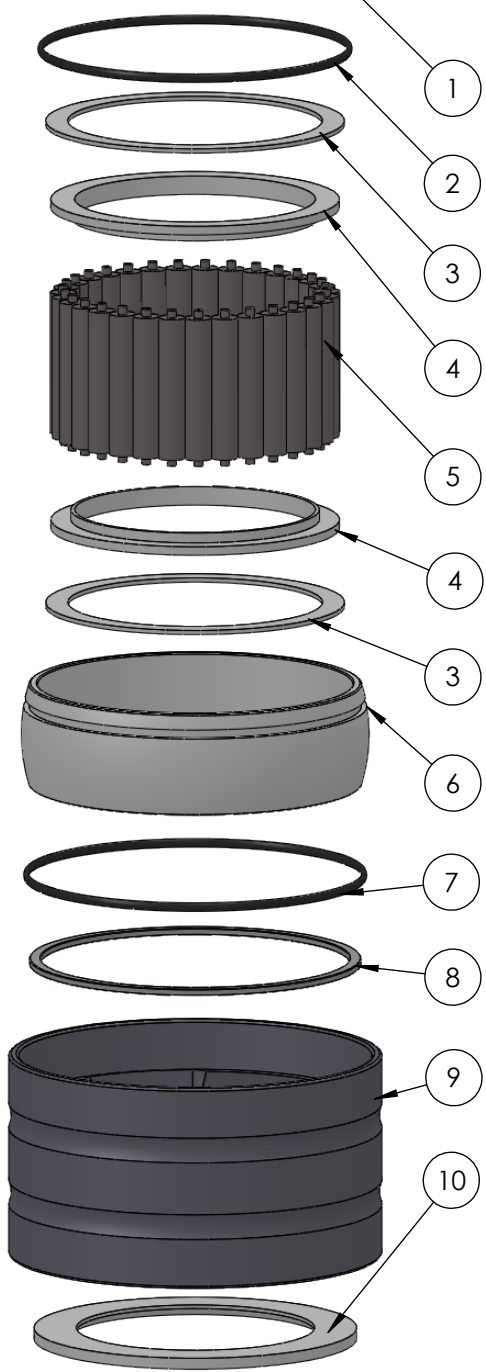
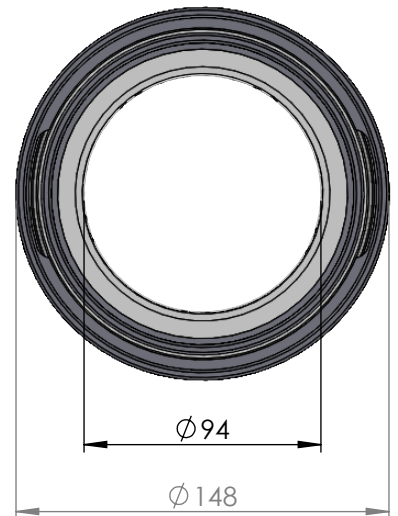
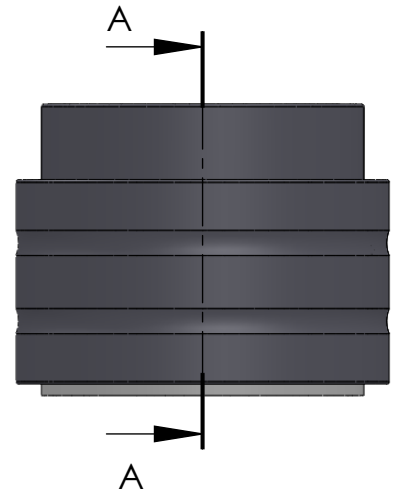


SECTION A-A
SCALE 1 : 3



ITEM NO.	PART NUMBER	PART NAME	Expl /QTY
1	M35-111	Inner house 4S090-4S099	1
2	O-ring	ø115 x 2.5mm	1
3	M03-228	Delrin Lockring ø118,5 x 101 x 1,75mm	2
4	M05-221	L-ring ø95 ø98.5 ø115	2
5	M01-340	Roller ø10.5 x 57mm	31
6	M11-105	Ball 4S080-4S099	1
7	O-ring	ø120 x 2.5mm	1
8	M09-110	Alu lockring ø122.5 x ø131.5	1
9	M31-111	Outer house 4S080-4S099	1
10	M07-176	Washer ø94.5 ø128	1

DWG NR / NAME:

4S094 / Self-aligning lower bearing

BATCH NR:

PROJECT:

Shaft Ø94mm, max working load 6200kg

REKV.NR / ORDRE NR:

DATE:

27-08-2009

NAME:

JR

SCALE / PAPER:

1:3.5 / A4

MATERIAL:

WEIGHT:

g

LOCATION:

ORDRE DATO:

MODIFY DATE:

: /

REV:

LEV.DATO:

Jefa Rudder
SYSTEMS

JEFA MARINE A/S
NIMBUSVEJ 2
2670 GREVE, DENMARK

Tlf: +45 4615 5210 & Fax: +45 46155208
Email: info@jefa.com www.jefa.com