

A

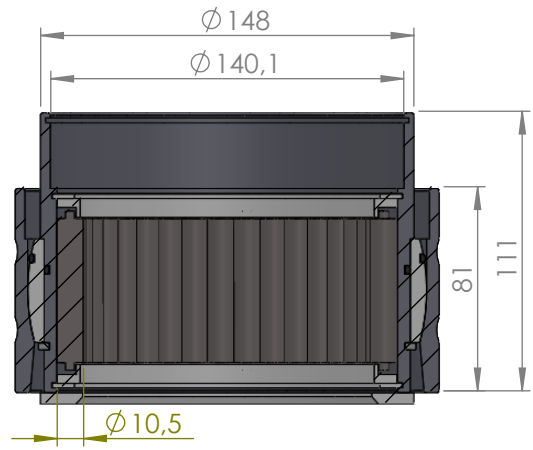
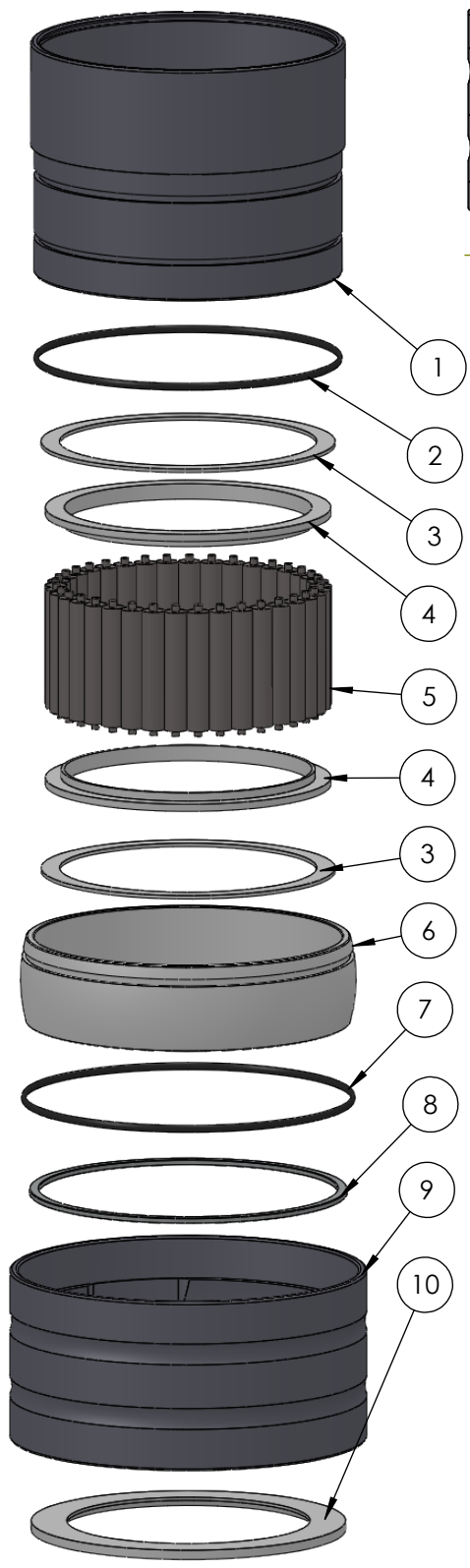
B

C

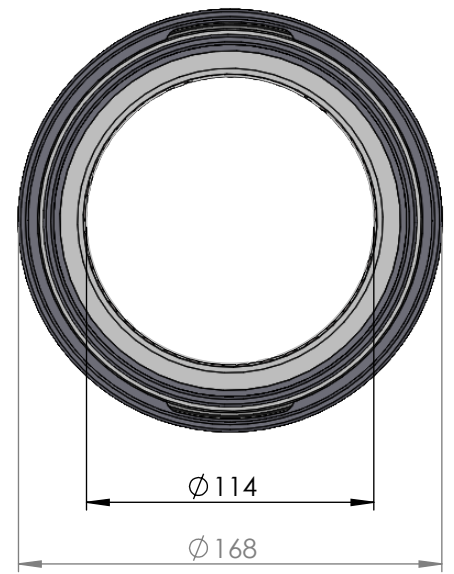
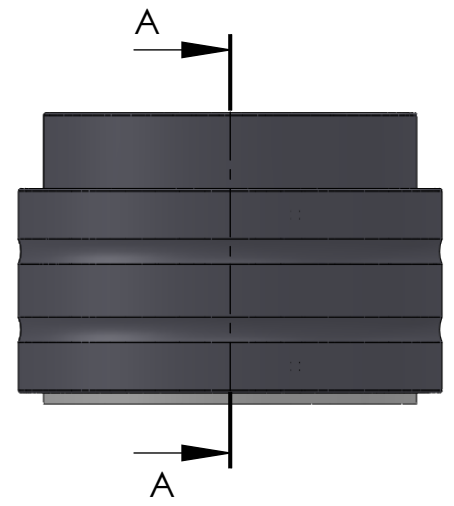
D

E

F



SECTION A-A  
SCALE 1 : 3



ITEM NO.	PART NUMBER	PART NAME	Expl /QTY
1	M35-115	Inner house 4S110-4S119	1
2	O-ring	$\varnothing 130 \times 2.5\text{mm}$	1
3	M03-275	Delrin Lockring $\varnothing 138,5 \times \varnothing 121 \times 1,75\text{mm}$	2
4	M05-284	L-ring $\varnothing 116 \varnothing 119.5 \varnothing 135$	2
5	M01-340	Roller $\varnothing 10.5 \times 57\text{mm}$	37
6	M11-107	Ball 4S100-4S119	1
7	O-ring	$\varnothing 140 \times 2.5\text{mm}$	1
8	M09-115	Alu lockring $\varnothing 140.5 \times \varnothing 149.5$	1
9	M31-116	Outer house 4S100-4S119	1
10	M07-200	Washer $\varnothing 114.5 \varnothing 148$	1

DWG NR / NAME:

### 4S114 / Self-aligning lower bearing

BATCH NR:

PROJECT:  
Shaft  $\varnothing 114\text{mm}$ , max working load 7300kg

REKV.NR / ORDRE NR:

DATE:  
27-08-2009

NAME:  
JR

SCALE / PAPER:  
1:3.5 / A4

MATERIAL:  
WEIGHT: g

LOCATION:

ORDRE DATO:

MODIFY DATE:  
: /

REV:

LEV.DATO:



JEFA MARINE A/S  
NIMBUSVEJ 2  
2670 GREVE, DENMARK

Tlf: +45 4615 5210 & Fax: +45 46155208  
Email: info@jefa.com www.jefa.com