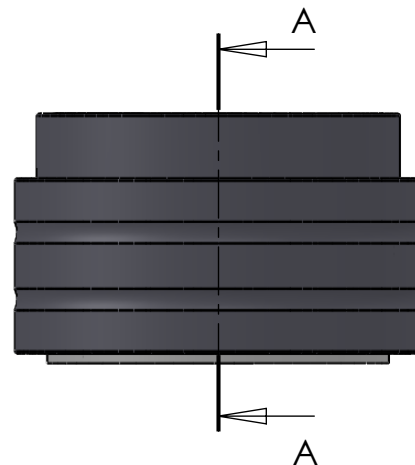
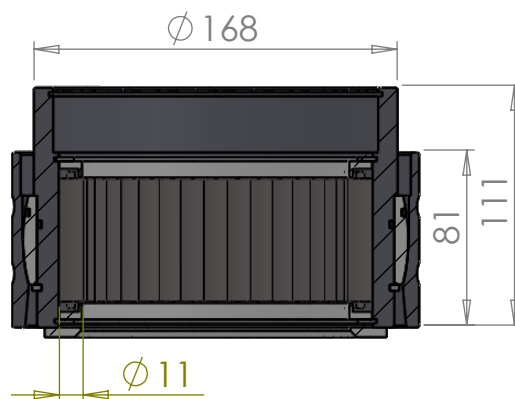
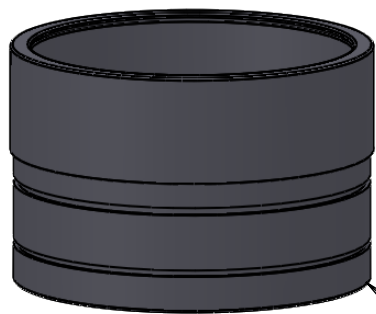


A



B

SECTION A-A
SCALE 1 : 3.5

C



D

E

ITEM NO.	PART NUMBER	PART NAME	QTY.
1	M35-117	Inner house 4S120-4S129	1
2	O-ring	$\phi 150 \times 2.5\text{mm}$	1
3	M03-285	Delrin Lockring $\phi 148,5 \times \phi 131 \times 1,75\text{mm}$	2
4	M05-296	L-ring $\phi 123 \phi 126.5 \phi 145$	2
5	M01-348	Roller $\phi 11.0 \times 57\text{mm}$	38
6	M11-109	Ball 4S120-4S139	1
7	O-ring	$\phi 160 \times 2.5\text{mm}$	1
8	M09-120	Alu lockring $\phi 160.5 \times \phi 169.5$	1
9	M31-121	Outer house 4S120-4S139	1
10	M07-212	Washer $\phi 124.5 \phi 158$	1

DWG NR / NAME:

4S123 / Self-aligning lower bearing

BATCH NR:

PROJECT:

Shaft $\phi 123\text{mm}$, max working load 7900kg

REKV.NR / ORDRE NR:

DATE:

27-08-2009

NAME:

JR

SCALE / PAPER:

1:4 / A4

MATERIAL:

WEIGHT:

g

LOCATION:

ORDRE DATO:

MODIFY DATE:

: /

REV:

LEV.DATO:

Jefa Rudder
SYSTEMS

JEFA MARINE A/S
NIMBUSVEJ 2
2670 GREVE, DENMARK

Tlf: +45 4615 5210 & Fax: +45 4615 5208
Email: info@jefa.com www.jefa.com