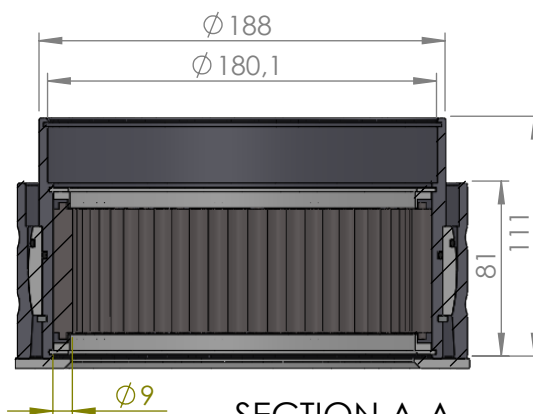
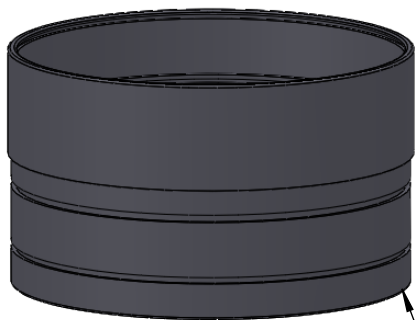
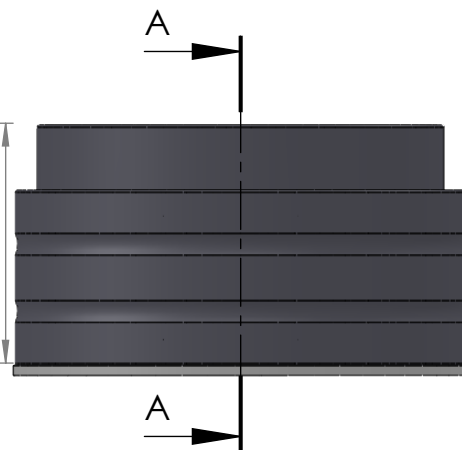
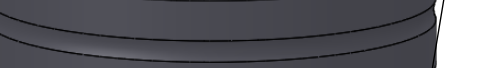


A

SECTION A-A  
SCALE 1 : 3.5

B



C

D

E

ITEM NO.	PART NUMBER	PART NAME	QTY
1	M35-123	Inner house 4S150-4S159	1
2	O-ring	$\phi 170 \times 2,5$	1
3	M03-315	Delrin Lockring $\phi 178,5 \times \phi 161 \times 1,75\text{mm}$	2
4	M05-356	L-ring $\phi 159 \phi 161.5 \phi 175$	2
5	M01-316	Roller $\phi 9.0 \times 57\text{mm}$	57
6	M11-111	Ball 4S140-4S159	1
7	O-ring	$\phi 180 \times 2,5$	1
8	M09-125	Alu lockring $\phi 180.5 \times \phi 189.5$	1
9	M31-126	Outer house 4S140-4S159	1
10	M07-232-E	Washer, delrin $\phi 158,5 \times \phi 210 \times 4,5\text{mm}$	1

DWG NR / NAME:

**4S157 / Self-aligning lower bearing**

BATCH NR:

PROJECT:

Shaft  $\phi 157\text{mm}$ , max working load 9300kg

REKV.NR / ORDRE NR:

DATE:

27-08-2009

NAME:

JR

SCALE / PAPER:

1:4 / A4

MATERIAL:

WEIGHT:

g

LOCATION:

ORDRE DATO:

MODIFY DATE:

: /

REV:

LEV.DATO:

*Jefa Rudder*  
SYSTEMS

JEFA MARINE A/S  
NIMBUSVEJ 2  
2670 GREVE. DENMARK

Tlf: +45 4615 5210 & Fax: +45 4615208  
Email: info@jefa.com www.jefa.com