

A

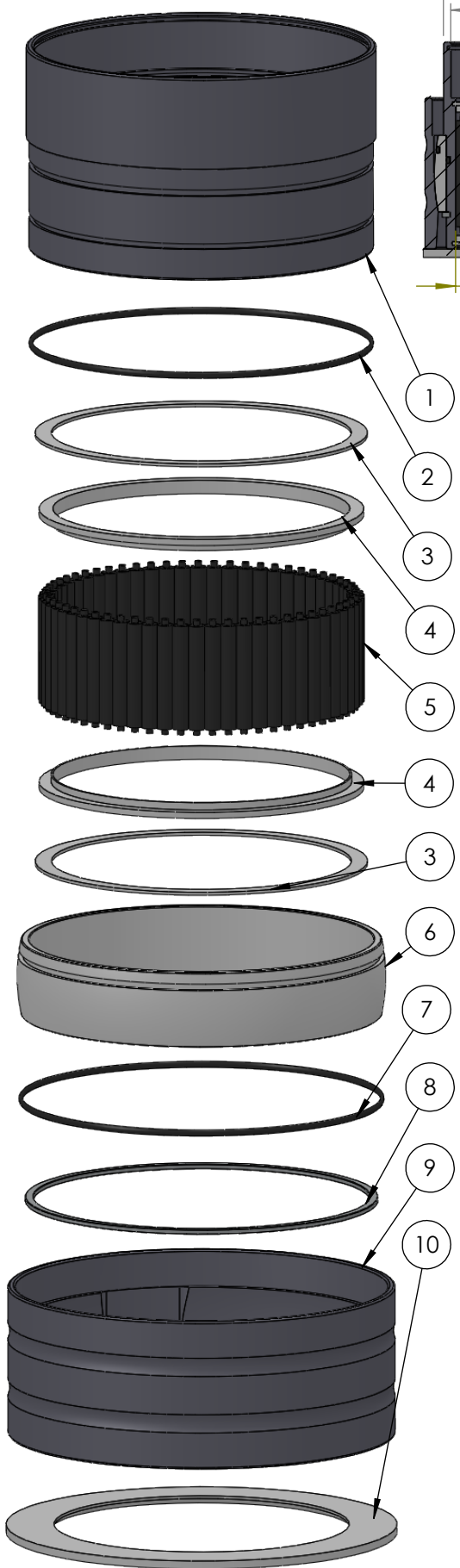
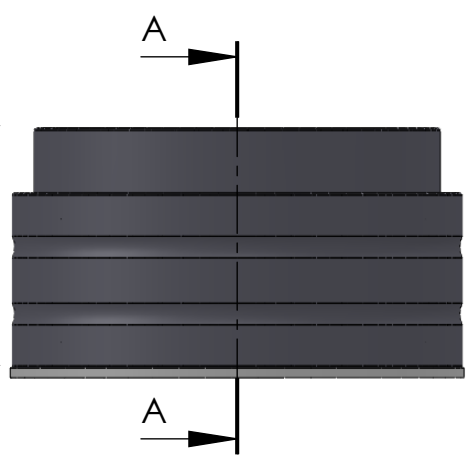
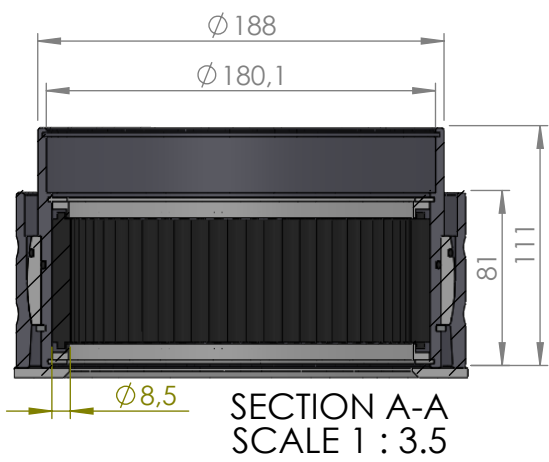
B

C

D

E

F



ITEM NO.	PART NUMBER	PART NAME	QTY
1	M35-123	Inner house 4S150-4S159	1
2	O-ring	ø170 x 2,5	1
3	M03-315	Delrin Lockring ø178,5 x ø161 x 1,75mm	2
4	M05-356	L-ring ø159 ø161.5 ø175	2
5	M01-308	Roller ø8.5 x 57mm	61
6	M11-111	Ball 4S140-4S159	1
7	O-ring	ø180 x 2,5	1
8	M09-125	Alu lockring ø180.5 x ø189.5	1
9	M31-126	Outer house 4S140-4S159	1
10	M07-232-E	Washer, delrin ø158,5 x ø210 x 4,5mm	1

DWG NR / NAME:

4S158 / Self-aligning lower bearing

BATCH NR:

PROJECT:
Shaft Ø158mm, max working load 9300kg

REKV.NR / ORDRE NR:

DATE:
27-08-2009

NAME:
JR

SCALE / PAPER:
1:4 / A4

MATERIAL:
WEIGHT: g

LOCATION:

ORDRE DATO:

MODIFY DATE:
: /

REV:

LEV.DATO:

Jefa Rudder
SYSTEMS

JEFA MARINE A/S
NIMBUSVEJ 2
2670 GREVE, DENMARK

Tlf: +45 4615 5210 & Fax: +45 4615208
Email: info@jefa.com www.jefa.com