

A

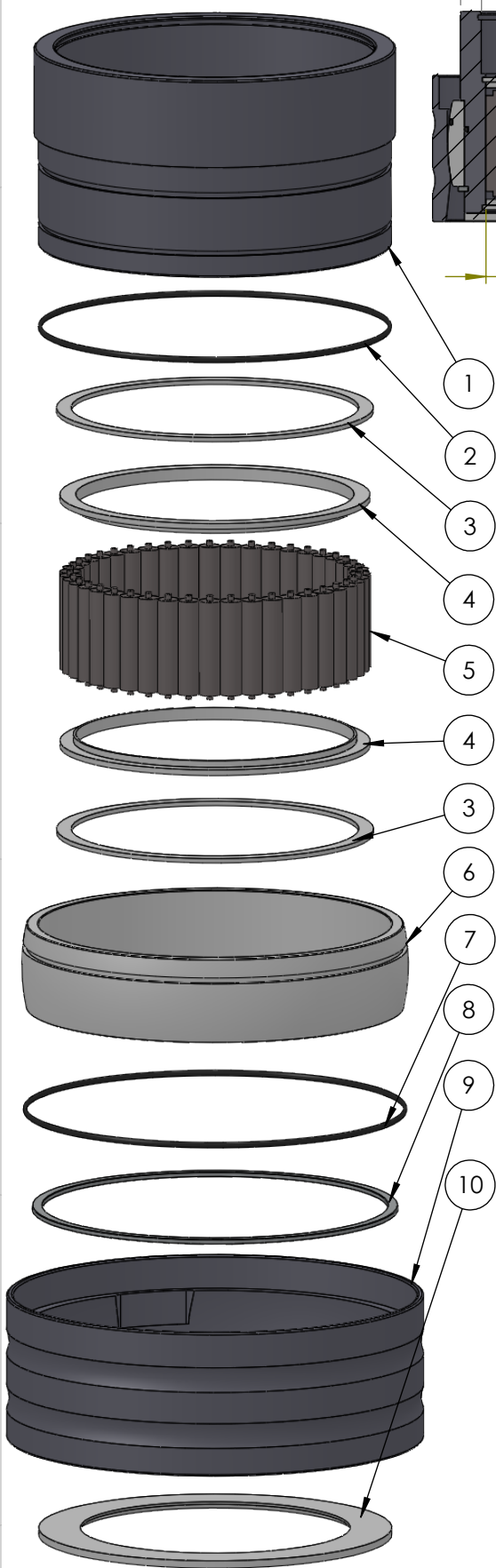
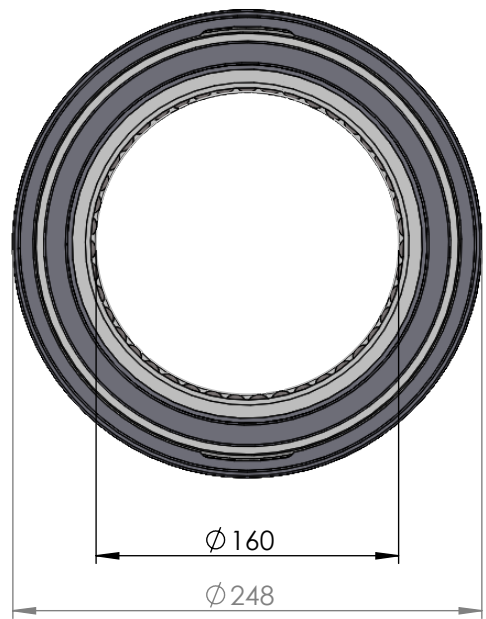
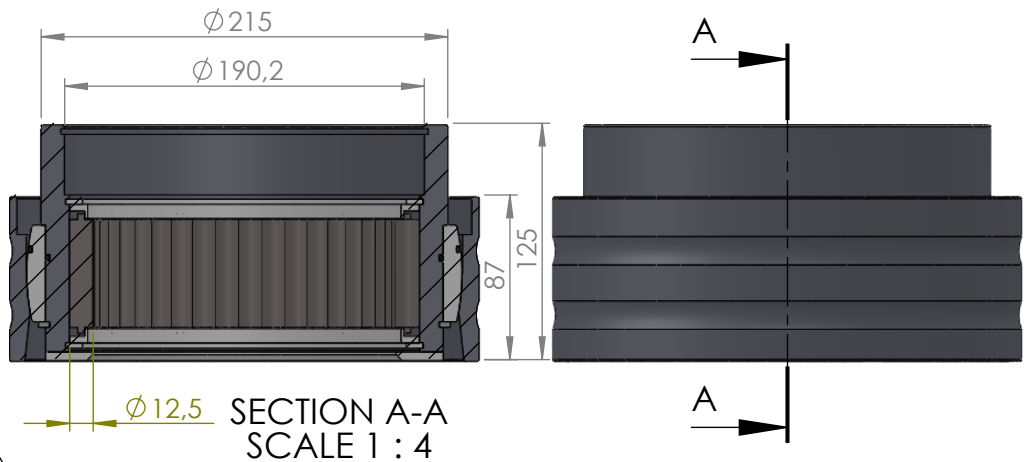
B

C

D

E

F



ITEM NO.	PART NUMBER	PART NAME	QTY
1	M35-125	Inner house 4S160-4S169	1
2	O-ring	Ø200 x 2.5mm	1
3	M03-725	Delrin Lockring ø188,5 x ø171 x 2,75mm	2
4	M05-365	L-ring ø165 ø168.5 ø185	2
5	M01-372	Roller ø12.5 x 57mm	43
6	M11-113	Ball 4S160-4S179	1
7	O-ring	ø210 x 2.5mm	1
8	M09-140	Alu lockring ø205,5 x ø217,5	1
9	M31-131	Outer house 4S160-4S179	1
10	M07-237	Washer, delrin ø160,5 x ø210 x 4,5mm	1

DWG NR / NAME:

4S160 / Self-aligning lower bearing

BATCH NR:

PROJECT:
Shaft Ø160mm, max working load 9500kg

REKV.NR / ORDRE NR:

DATE:
27-08-2009

NAME:
JR

SCALE / PAPER:
1:5 / A4

MATERIAL:
WEIGHT: g

LOCATION:

ORDRE DATO:

MODIFY DATE:
: /

REV:

LEV.DATO:

Jefa Rudder
SYSTEMS

JEFA MARINE A/S
NIMBUSVEJ 2
2670 GREVE, DENMARK

Tlf: +45 4615 5210 & Fax: +45 46155208
Email: info@jefa.com www.jefa.com