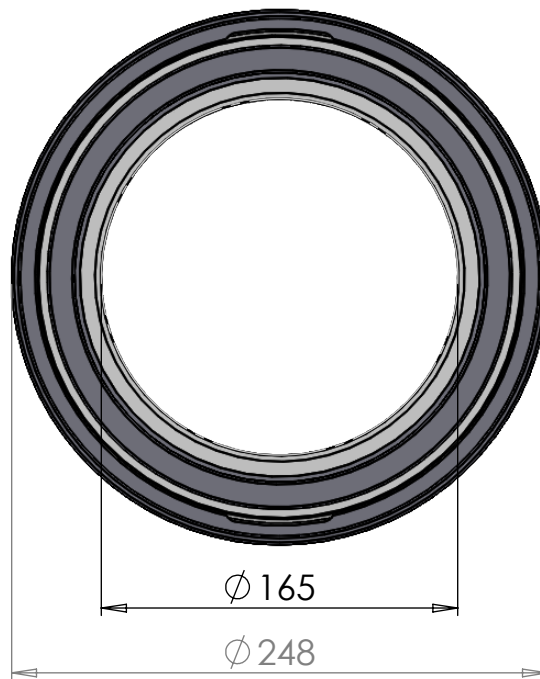
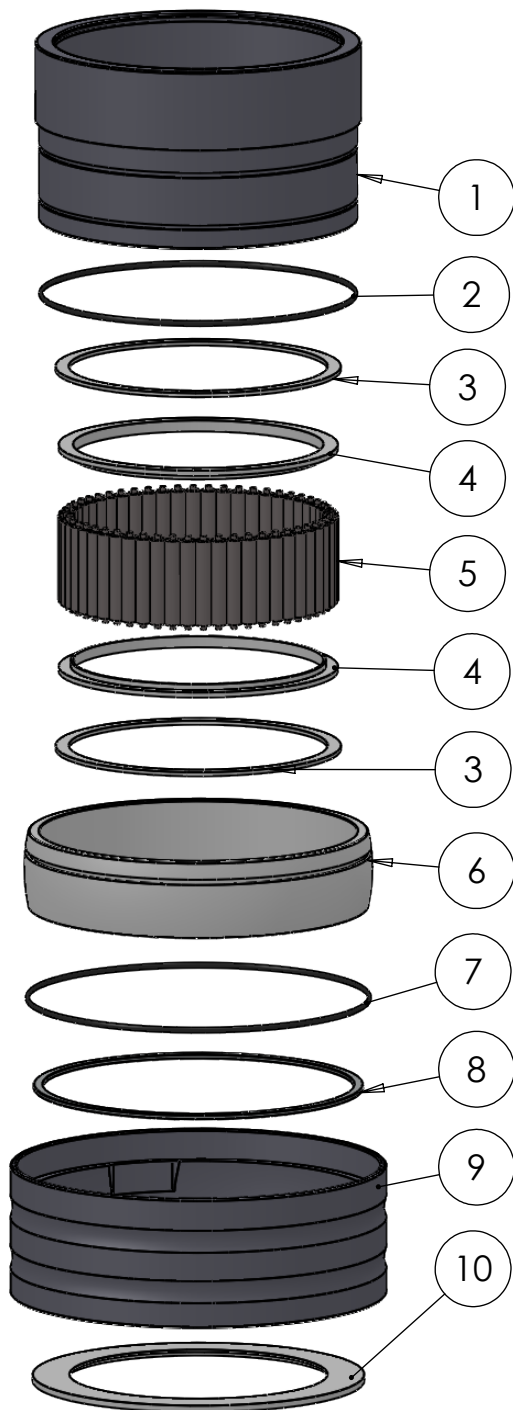
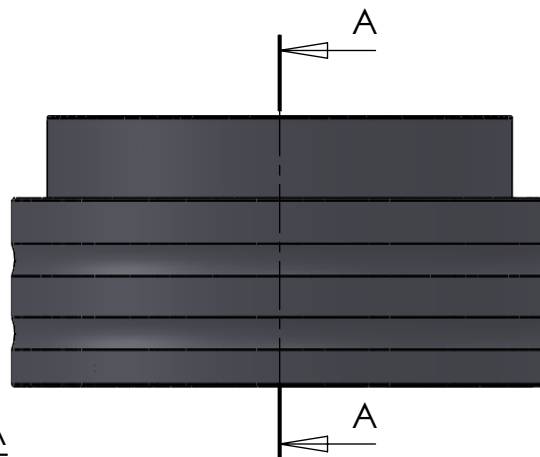


SECTION A-A  
SCALE 1 : 3.5



ITEM NO.	PART NUMBER	PART NAME	QTY.
1	M35-125	Inner house 4S160-4S169	1
2	O-ring	$\varnothing 200 \times 2.5$	1
3	M03-725	Delrin Lockring $\varnothing 188,5 \times \varnothing 171 \times 2,75\text{mm}$	2
4	M05-365	L-ring $\varnothing 165 \varnothing 168.5 \varnothing 185$	2
5	M01-332	Roller $\varnothing 10.0 \times 57\text{mm}$	54
6	M11-113	Ball 4S160-4S179	1
7	O-ring	$\varnothing 210 \times 2.5$	1
8	M09-140	Alu lockring $\varnothing 205 \times \varnothing 217$	1
9	M31-131	Outer house 4S160-4S179	1
10	M07-239	Washer $\varnothing 170.5 \varnothing 219$	1

DWG NR / NAME:

## 4S165 / Self-aligning lower bearing

BATCH NR:

PROJECT:

Shaft  $\varnothing 165\text{mm}$ , max working load 9500kg

REKV.NR / ORDRE NR:

DATE:

27-08-2009

NAME:

JR

SCALE / PAPER:

1:6 / A4

MATERIAL:

WEIGHT:

g

LOCATION:

REV:

ORDRE DATO:

LEV.DATO:

*Jefa Rudder*  
SYSTEMS

JEFA MARINE A/S  
NIMBUSVEJ 2  
2670 GREVE, DENMARK

Tlf: +45 4615 5210 & Fax: +45 4615 5208  
Email: info@jefa.com www.jefa.com

: /