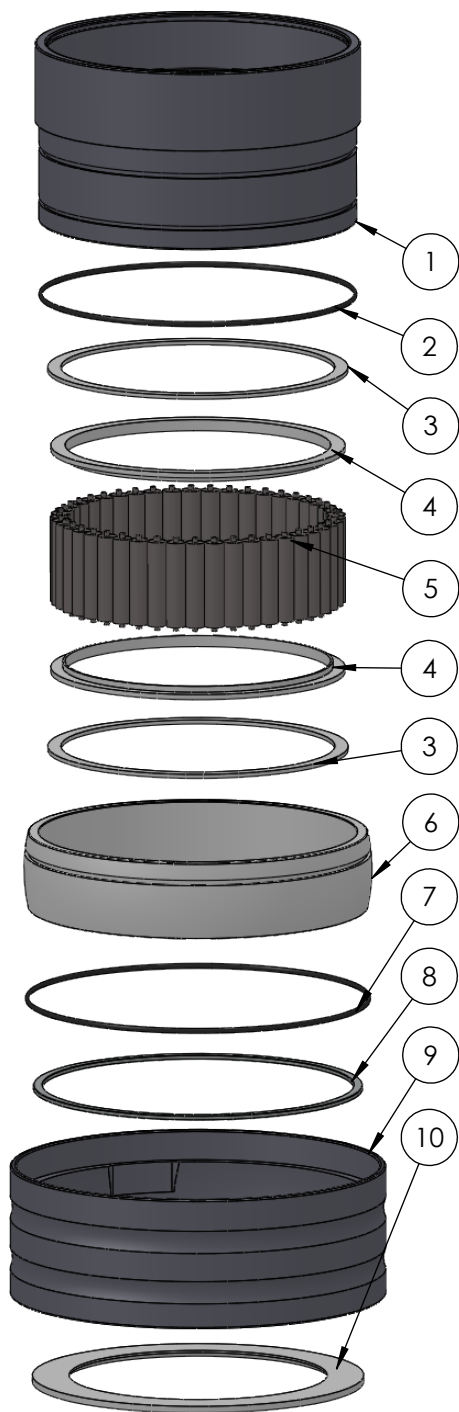
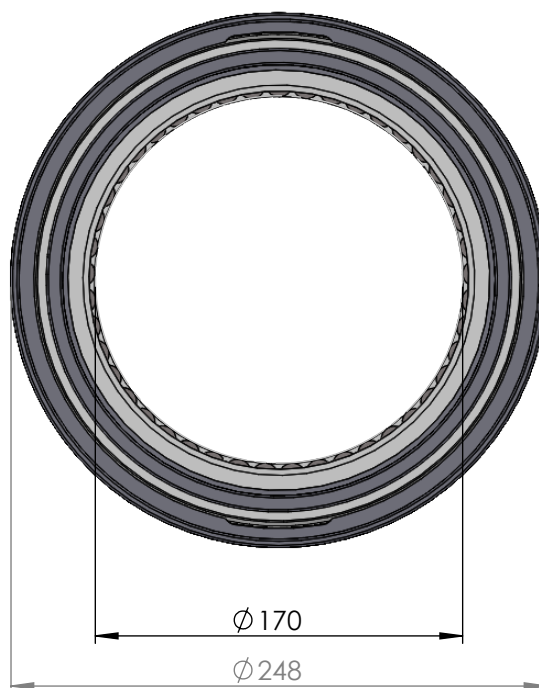
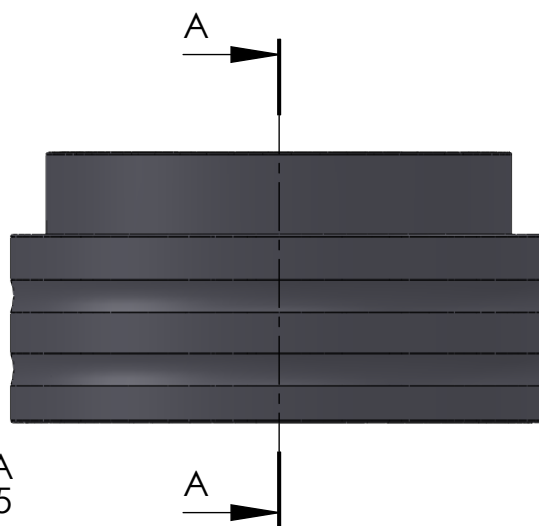


SECTION A-A
SCALE 1 : 3.5



| ITEM NO. | PART NUMBER | PART NAME | QTY |
|----------|-------------|--------------------------------------------------------------------------------|-----|
| 1 | M35-127 | Inner house 4S170-4S179 | 1 |
| 2 | O-ring | $\varnothing 200 \times 2.5$ | 1 |
| 3 | M03-735 | Delrin Lockring $\varnothing 198,5 \times \varnothing 11 \times 2,75\text{mm}$ | 2 |
| 4 | M05-377 | L-ring $\varnothing 175 \varnothing 178.5 \varnothing 195$ | 2 |
| 5 | M01-372 | Roller $\varnothing 12.5 \times 57\text{mm}$ | 45 |
| 6 | M11-113 | Ball 4S160-4S179 | 1 |
| 7 | O-ring | $\varnothing 210 \times 2.5$ | 1 |
| 8 | M09-140 | Alu lockring $\varnothing 205 \times \varnothing 217$ | 1 |
| 9 | M31-131 | Outer house 4S160-4S179 | 1 |
| 10 | M07-239 | Washer $\varnothing 170.5 \varnothing 219$ | 1 |

DWG NR / NAME:

4S170 / Self-aligning lower bearing

BATCH NR:

PROJECT:

Shaft $\varnothing 170\text{mm}$, max working load 9700kg

REKV.NR / ORDRE NR:

DATE:

27-08-2009

NAME:

JR

SCALE / PAPER:

1:5 / A4

MATERIAL:

WEIGHT:

LOCATION:

g

ORDRE DATO:

MODIFY DATE:

: /

REV:

LEV.DATO:

Jefa Rudder
S Y S T E M S

JEFA MARINE A/S
NIMBUSVEJ 2
2670 GREVE, DENMARK

Tlf: +45 4615 5210 & Fax: +45 46155208
Email: info@jefa.com www.jefa.com