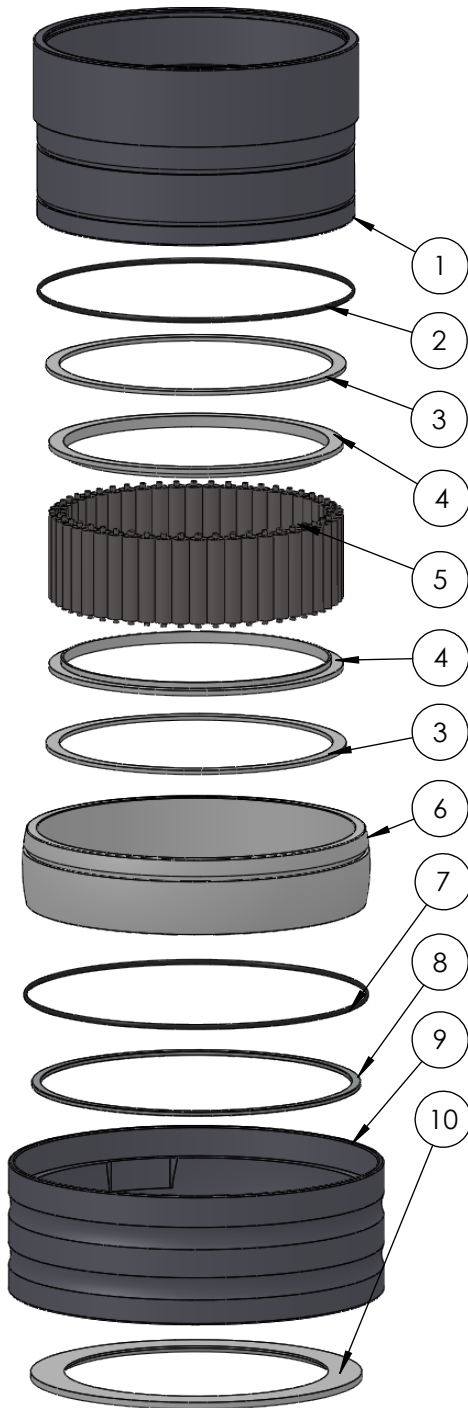
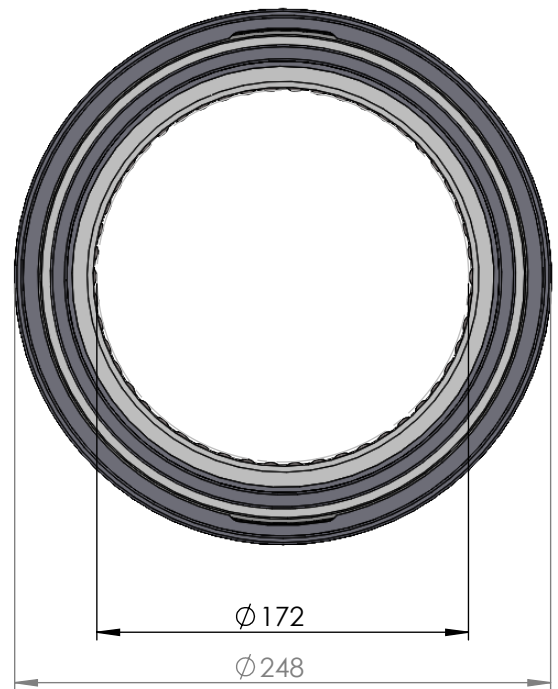
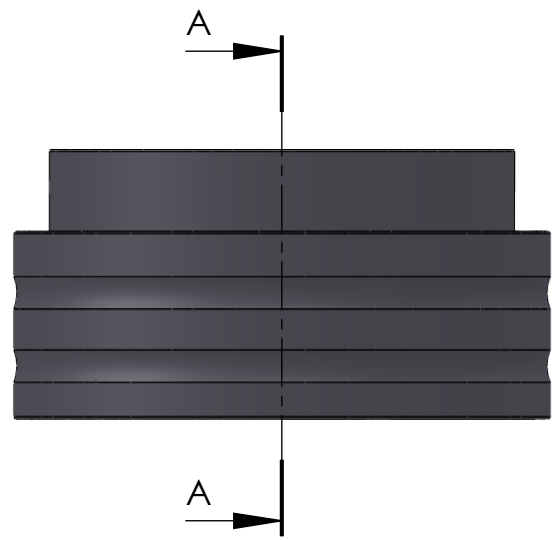


SECTION A-A
SCALE 1 : 3.5



ITEM NO.	PART NUMBER	PART NAME	QTY
1	M35-127	Inner house 4S170-4S179	1
2	O-ring	$\varnothing 200 \times 2.5$	1
3	M03-735	Delrin Lockring $\varnothing 198,5 \times \varnothing 181 \times 2,75\text{mm}$	2
4	M05-377	L-ring $\varnothing 175 \varnothing 178.5 \varnothing 195$	2
5	M01-356	Roller $\varnothing 11.5 \times 57\text{mm}$	50
6	M11-113	Ball 4S160-4S179	1
7	O-ring	$\varnothing 210 \times 2.5$	1
8	M09-140	Alu lockring $\varnothing 205 \times \varnothing 217$	1
9	M31-131	Outer house 4S160-4S179	1
10	M07-242	Washer $\varnothing 174.5 \varnothing 219$	1

DWG NR / NAME:

4S172 / Self-aligning lower bearing

BATCH NR:

PROJECT:

Shaft $\varnothing 172\text{mm}$, max working load 9700kg

REKV.NR / ORDRE NR:

DATE:

27-08-2009

NAME:

JR

SCALE / PAPER:

1:5 / A4

MATERIAL:

WEIGHT:

g

LOCATION:

REV:

ORDRE DATO:

LEV.DATO:

Jefa Rudder
SYSTEMS

JEFA MARINE A/S
NIMBUSVEJ 2
2670 GREVE, DENMARK

Tlf: +45 4615 5210 & Fax: +45 4615 5208
Email: info@jefa.com www.jefa.com

: /