

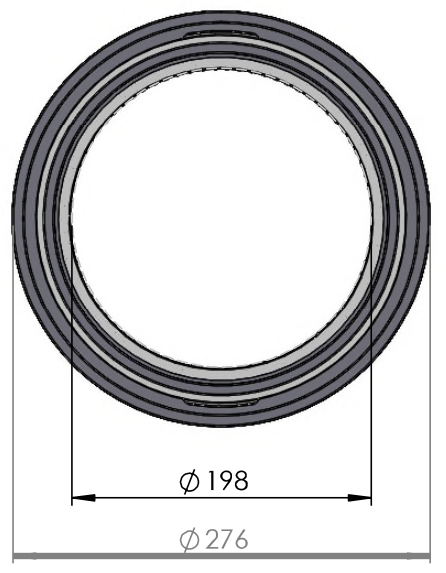
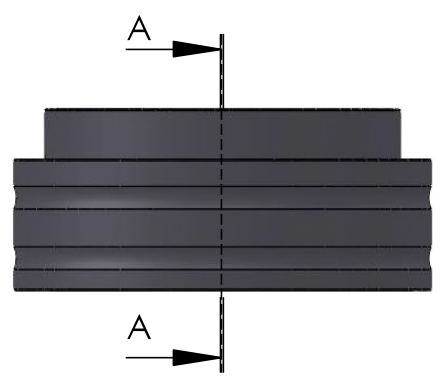
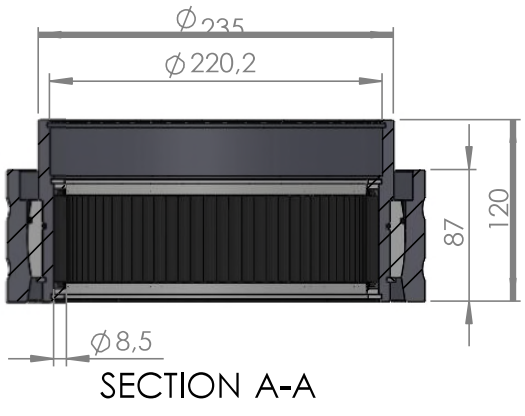
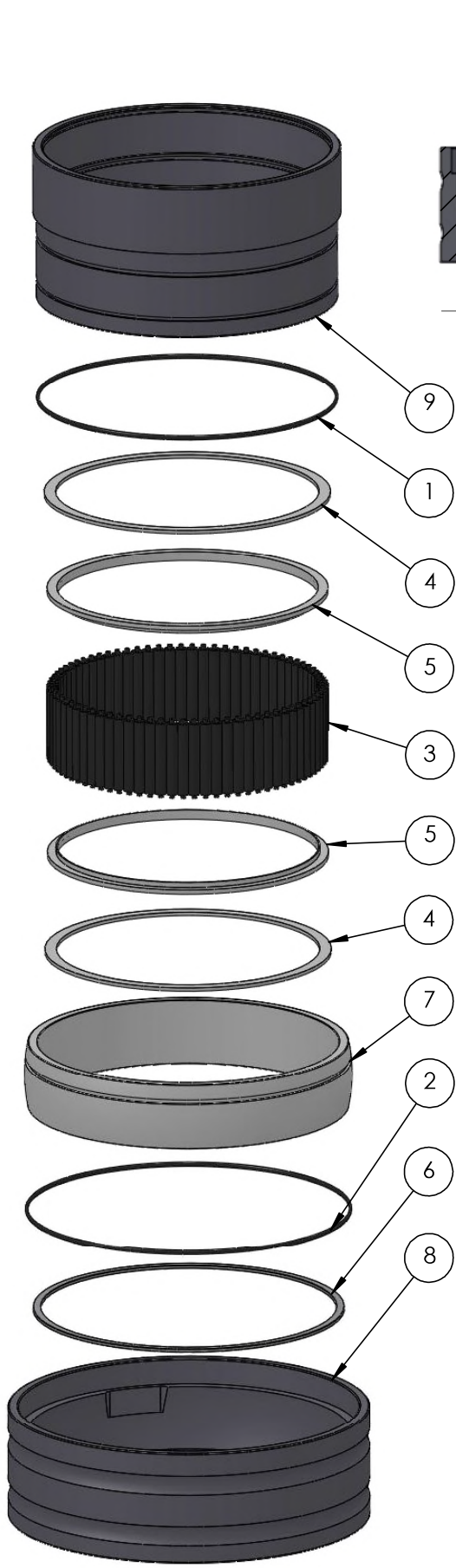
A

B

C

D

E



ITEM NO.	PART NUMBER	PART NAME	QTY.
1	O-ring	$\phi 200 \times 2.5$	1
2	O-ring	$\phi 220 \times 2.5$	1
3	M01-308	Roller $\phi 8.5 \times 57\text{mm}$	76
4	M03-755	Delrin Lockring $\phi 218.5 \times \phi 201 \times 2.75\text{mm}$	2
5	M05-383	L-ring $\phi 199 \times \phi 215 \times 7.5\text{mm}$	2
6	M09-150	Alu lockring $\phi 225.5 \times \phi 237.5$	1
7	M11-115	Ball 4S180-4S199	1
8	M31-136	Outer house 4S180-4S199	1
9	M35-131	Inner house 4S190-4S199	1

DWG-NR / NAME:

4S198 / Self-aligning lower bearing

PROJECT: Shaft $\phi 198\text{mm}$, max working load 10800 kg

DATE: 01-10-2009	NAME: JR	SCALE / PAPER: 1:5 / A4	MATERIAL: WEIGHT: g	LOCATION:	ORDRE DATO:
MODIFY DATE: 24-08-2023				REV:	LEV.DATO:

Jefa Rudder
SYSTEMS

JEFA MARINE A/S
NIMBUSVEJ 2
2670 GREVE, DENMARK
Tlf: +45 4615 5210
E-mail: info@jefa.dk https://jefa.dk