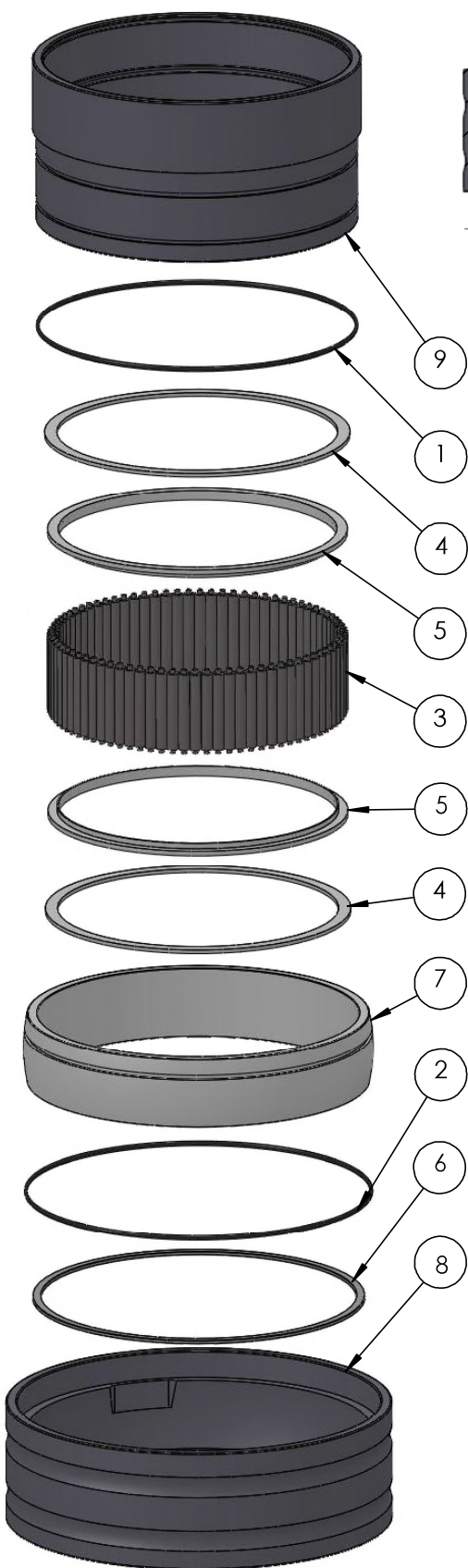
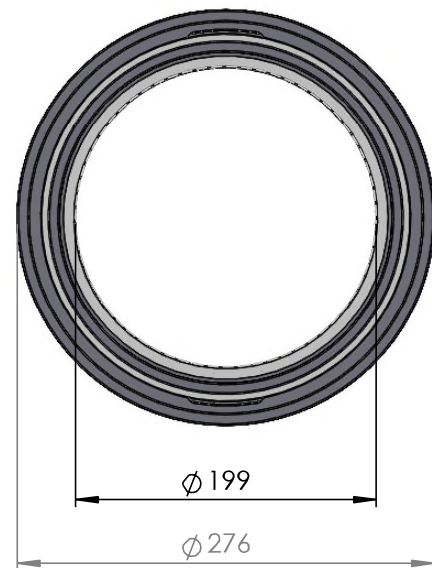
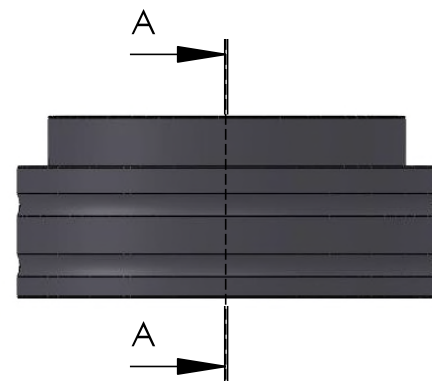


SECTION A-A



ITEM NO.	PART NUMBER	PART NAME	QTY.
1	O-ring	$\phi 200 \times 2.5$	1
2	O-ring	$\phi 220 \times 2.5$	1
3	M01-301	Roller $\phi 8.0 \times 57\text{mm}$	80
4	M03-755	Delrin Lockring $\phi 218.5 \times \phi 201 \times 2.75\text{mm}$	2
5	M05-383	L-ring $\phi 199 \times \phi 215 \times 7.5\text{mm}$	2
6	M09-150	Alu lockring $\phi 225.5 \times \phi 237.5$	1
7	M11-115	Ball 4S180-4S199	1
8	M31-136	Outer house 4S180-4S199	1
9	M35-131	Inner house 4S190-4S199	1

DWG NR / NAME:

4S199 / Self-aligning lower bearing

BATCH NR:

PROJECT:

Shaft $\phi 199\text{mm}$, max working load 10800 kg

REKV.NR / ORDRE NR:

DATE:
01-10-2009NAME:
JRSCALE / PAPER:
1:5 / A4MATERIAL:
WEIGHT: g

LOCATION:

ORDRE DATO:

MODIFY DATE:
24-08-2023 /

REV:

LEV.DATO:

Jefa Rudder
SYSTEMS

JEFA MARINE A/S
NIMBUSVEJ 2
2670 GREVE, DENMARK
Tlf: +45 4615 5210
E-mail: info@jefa.dk https://jefa.dk