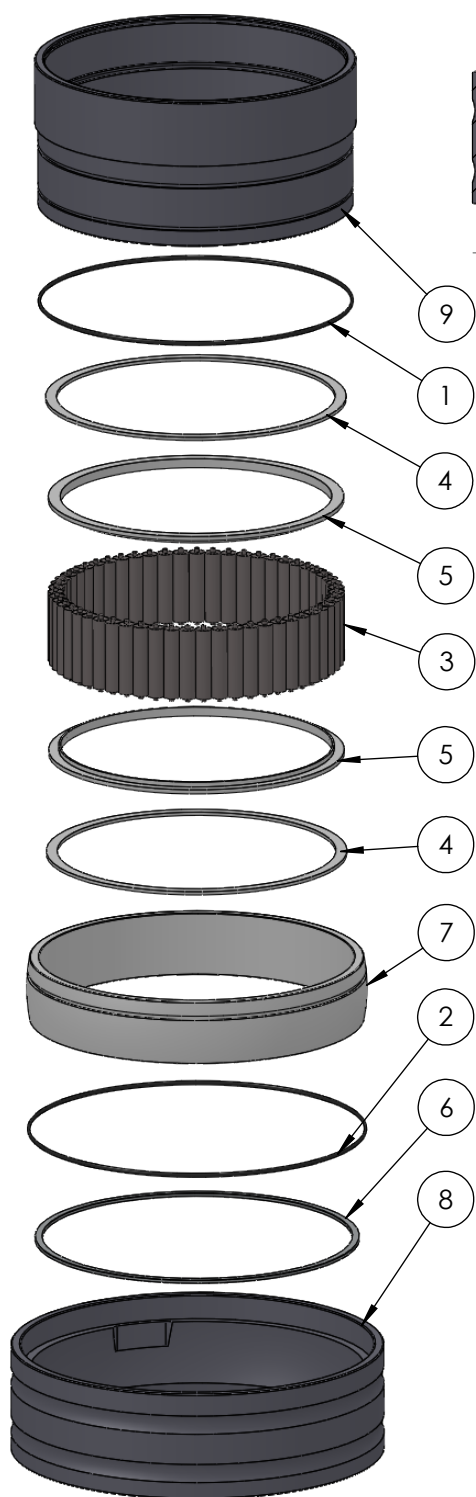
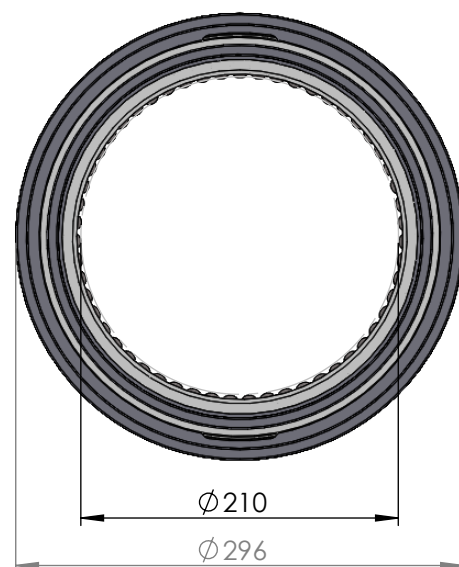
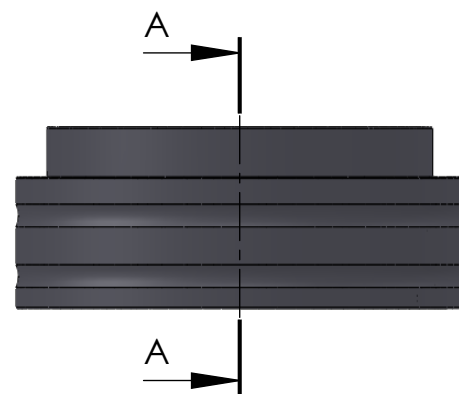


SECTION A-A
SCALE 1 : 5



ITEM NO.	PART NUMBER	PART NAME	QTY
1	O-ring	$\varnothing 240 \times 2.5$	1
2	O-ring	$\varnothing 250 \times 2.5$	1
3	M01-372	Roller $\varnothing 12.5 \times 57\text{mm}$	55
4	M03-775	Delrin Lockring $\varnothing 238,5 \times \varnothing 221 \times 2,75\text{mm}$	2
5	M05-389	L-ring $\varnothing 215 \varnothing 235 \times 7,5\text{mm}$	2
6	M09-160	Alu lockring $\varnothing 246 \times \varnothing 258$	1
7	M11-117	Ball 4S200-4S219	1
8	M31-141	Outer house 4S200-4S219	1
9	M35-135	Inner house 4S210-4S219	1

DWG NR / NAME:

4S210 / Self-aligning lower bearing

BATCH NR:

PROJECT:

Shaft $\varnothing 210\text{mm}$, max working load 12000 kg

REKV.NR / ORDRE NR:

DATE:
07-10-2009

NAME:
JR

SCALE / PAPER:
1:6 / A4

MATERIAL:
WEIGHT: g

LOCATION:

ORDRE DATO:

MODIFY DATE:

: /

REV:

LEV.DATO:

Jefa Rudder
SYSTEMS

JEFA MARINE A/S
NIMBUSVEJ 2
2670 GREVE, DENMARK

Tlf: +45 4615 5210 & Fax: +45 4615 5208
Email: info@jefa.com www.jefa.com