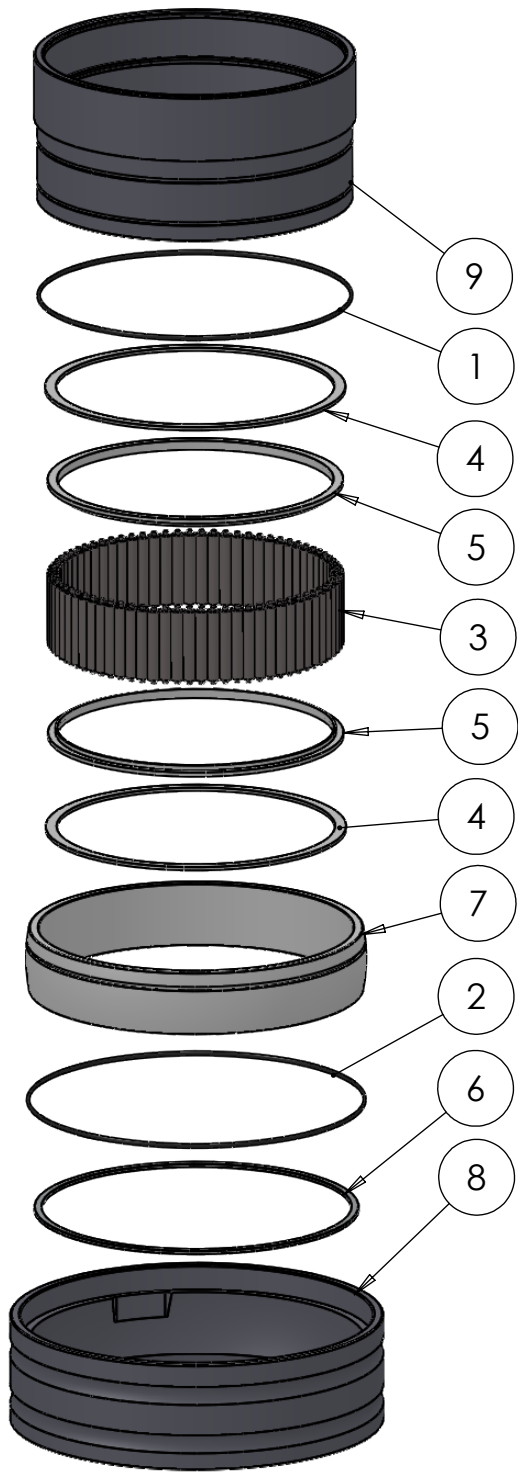


SECTION A-A
SCALE 1 : 3.5



ITEM NO.	PART NUMBER	PART NAME	QTY.
1	O-ring	$\phi 240 \times 2.5$	1
2	O-ring	$\phi 250 \times 2.5$	1
3	M01-324	Roller $\phi 9.5 \times 57\text{mm}$	74
4	M03-775	Delrin Lockring $\phi 238,5 \times \phi 221 \times 2,75\text{mm}$	2
5	M05-389-A	L-ring $\phi 219 \phi 235 \times 7,5\text{mm}$	2
6	M09-160	Alu lockring $\phi 246 \times \phi 258$	1
7	M11-117	Ball 4S200-4S219	1
8	M31-141	Outer house 4S200-4S219	1
9	M35-135	Inner house 4S210-4S219	1

DWG NR / NAME:

4S216 / Self-aligning lower bearing

BATCH NR:

PROJECT:
Shaft $\phi 216\text{mm}$, max working load 12000 kg

REKV.NR / ORDRE NR:

DATE:
28-09-2009

NAME:
JR

SCALE / PAPER:
1:6 / A4

MATERIAL:
WEIGHT: g

LOCATION:

ORDRE DATO:

MODIFY DATE:
: /

REV:

LEV.DATO:

Jefa Rudder
SYSTEMS

JEFA MARINE A/S
NIMBUSVEJ 2
2670 GREVE, DENMARK

Tlf: +45 4615 5210 & Fax: +45 4615 5208
Email: info@jefa.com www.jefa.com