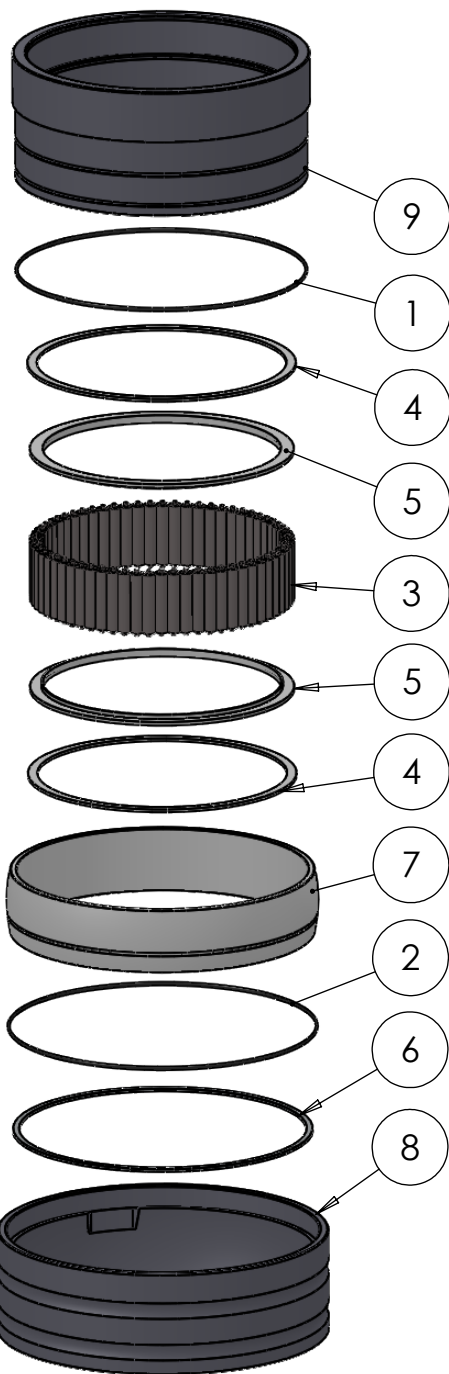
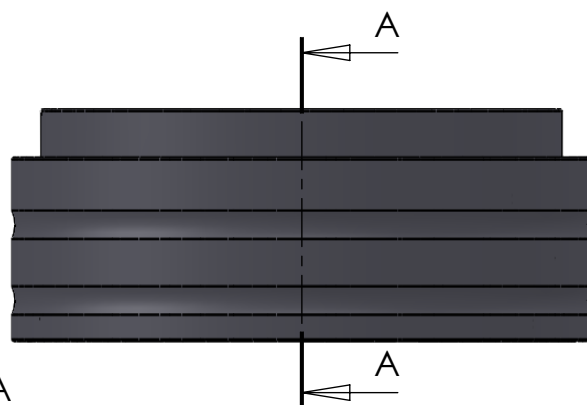


SECTION A-A
SCALE 1 : 4



| ITEM NO. | PART NUMBER | PART NAME | QTY. |
|----------|-------------|---|------|
| 1 | O-ring | $\phi 260 \times 2.5$ | 1 |
| 2 | O-ring | $\phi 270 \times 2.5$ | 1 |
| 3 | M01-356 | Roller $\phi 11.5 \times 57\text{mm}$ | 64 |
| 4 | M03-785 | Delrin Lockring $\phi 248,5 \times \phi 231 \times 2,75\text{mm}$ | 2 |
| 5 | M05-395 | L-ring $\phi 225 \phi 245 \times 7,5\text{mm}$ | 2 |
| 6 | M09-170 | Alu lockring $\phi 266 \times \phi 278$ | 1 |
| 7 | M11-119 | Ball 4S220-4S239 | 1 |
| 8 | M31-146 | Outer house 4S220-4S239 | 1 |
| 9 | M35-137 | Inner house 4S220-4S229 | 1 |

DWG NR / NAME:

4S222 / Self-aligning lower bearing

BATCH NR:

PROJECT:

Shaft $\phi 222\text{mm}$, max working load 12500 kg

REKV.NR / ORDRE NR:

DATE:

28-09-2009

NAME:

JR

SCALE / PAPER:

1:7 / A4

MATERIAL:

WEIGHT:

g

LOCATION:

REV:

ORDRE DATO:

LEV.DATO:

MODIFY DATE:

: /

Jefa Rudder
SYSTEMS

JEFA MARINE A/S
NIMBUSVEJ 2
2670 GREVE, DENMARK

Tlf: +45 4615 5210 & Fax: +45 46155208
Email: info@jefa.com www.jefa.com