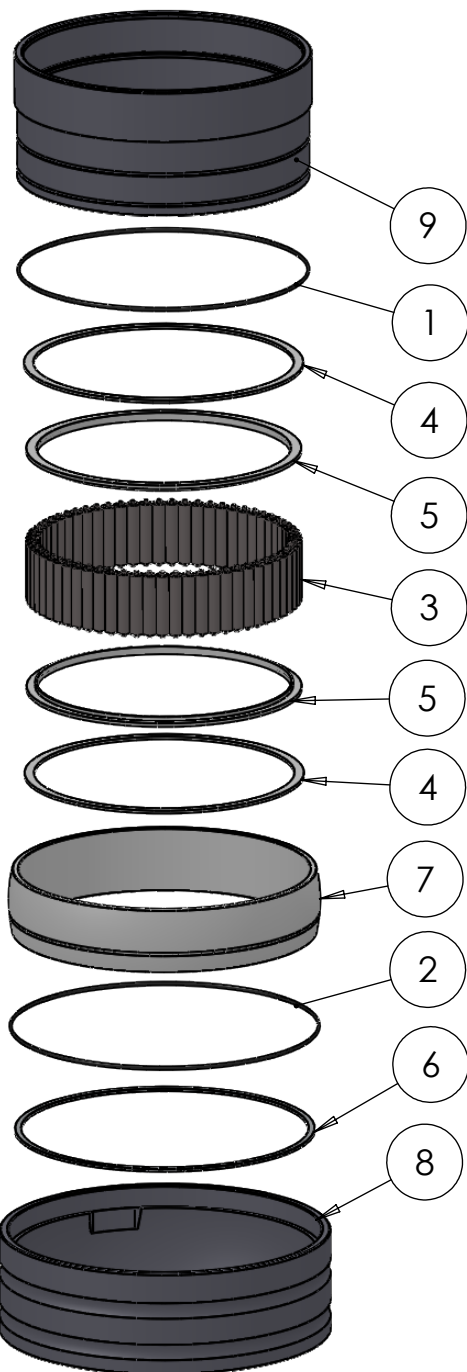
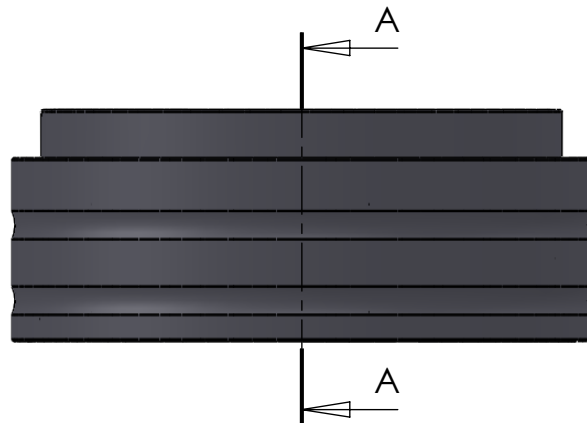


SECTION A-A  
SCALE 1 : 4



ITEM NO.	PART NUMBER	PART NAME	QTY.
1	O-ring	$\phi 260 \times 2.5$	1
2	O-ring	$\phi 270 \times 2.5$	1
3	M01-364	Roller $\phi 12.0 \times 57\text{mm}$	63
4	M03-795	Delrin Lockring $\phi 258,5 \times \phi 241 \times 2,75\text{mm}$	2
5	M05-405	L-ring $\phi 235 \times \phi 255 \times 7,5\text{mm}$	2
6	M09-170	Alu lockring $\phi 266 \times \phi 278$	1
7	M11-119	Ball 4S220-4S239	1
8	M31-146	Outer house 4S220-4S239	1
9	M35-139	Inner house 4S230-4S239	1

DWG NR / NAME:

## 4S231 / Self-aligning lower bearing

BATCH NR:

PROJECT:

Shaft  $\phi 231\text{mm}$ , max working load 13100 kg

REKV.NR / ORDRE NR:

DATE:

28-09-2009

NAME:

JR

SCALE / PAPER:

1:7 / A4

MATERIAL:

WEIGHT: g

LOCATION:

ORDRE DATO:

MODIFY DATE:

: /

REV:

LEV.DATO:

*Jefa Rudder*  
SYSTEMS

JEFA MARINE A/S  
NIMBUSVEJ 2  
2670 GREVE, DENMARK

Tlf: +45 4615 5210 & Fax: +45 4615 5208  
Email: info@jefa.com www.jefa.com