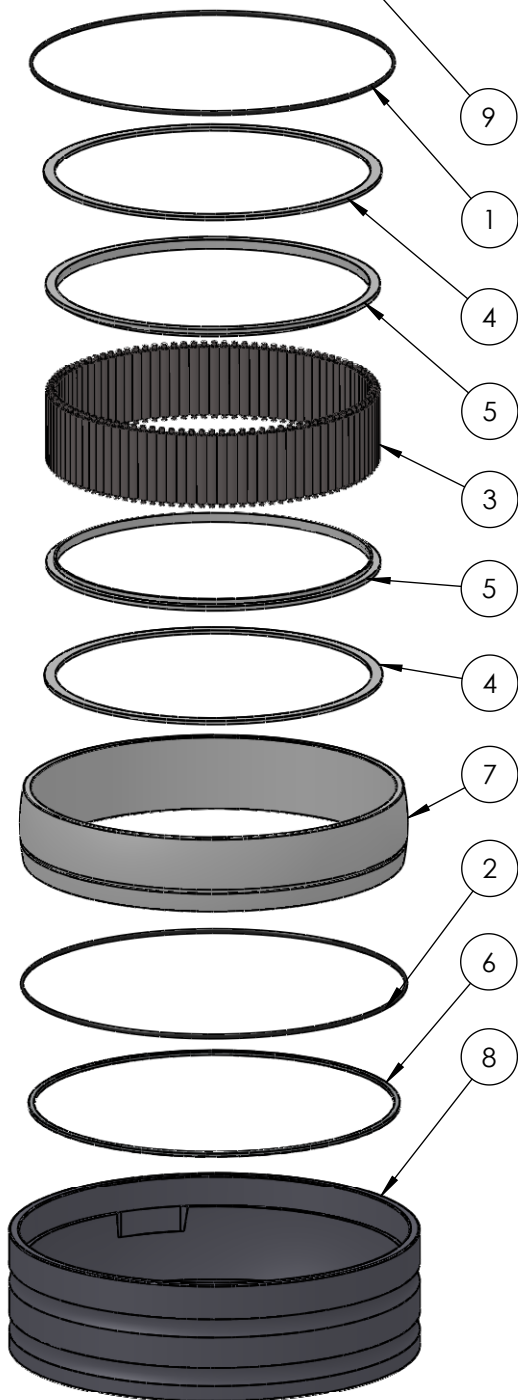


SECTION A-A



ITEM NO.	PART NUMBER	PART NAME	QTY
1		O-ring $\varnothing 288 \times 2.5$	1
2		O-ring $\varnothing 305 \times 2.5$	1
3	M01-301	Roller $\varnothing 8.0 \times 57\text{mm}$	100
4	M03-805	Lockring $\varnothing 251 \varnothing 269$	2
5	M05-396	L-ring $\varnothing 249 \varnothing 252 \varnothing 265$	2
6	M09-165	Alu lockring $\varnothing 286 \times \varnothing 295$	1
7	M11-121	Ball 4S240-4SF259	1
8	M31-151	Outer house 4S240-4S259	1
9	M35-141	Inner house 4S240-4S249	1

DWG NR / NAME:

**4S249 / Self-aligning lower bearing**

BATCH NR:

PROJECT:

Shaft  $\varnothing 249\text{mm}$ , max working load 13700 kg

REKV.NR / ORDRE NR:

DATE:  
08-10-2009NAME:  
JRSCALE / PAPER:  
1:6 / A4MATERIAL:  
WEIGHT:LOCATION:  
g

ORDRE DATO:

MODIFY DATE:

: /

REV:

LEV.DATO:

*Jefa Rudder*  
SYSTEMS

JEFA MARINE A/S  
NIMBUSVEJ 2  
2670 GREVE, DENMARK

Tlf: +45 4615 5210 & Fax: +45 4615 5208  
Email: info@jefa.com www.jefa.com