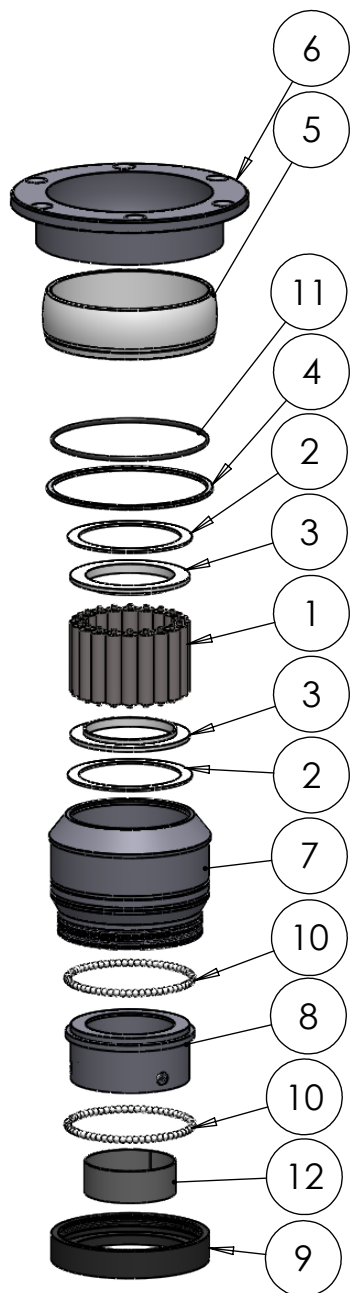


SECTION A-A  
SCALE 1 : 2.5



ITEM NO.	PART NUMBER	PART NAME	QTY.
1	M01-372	Roller $\phi 12.5 \times 57\text{mm}$	20
2	M03-213	Delrin Lockring $\phi 98,5 \times \phi 81 \times 1,75\text{mm}$	2
3	M05-176	L-ring $\phi 70 \phi 73.5 \phi 95$	2
4	M09-111	Alu lockring $\phi 122.5 \times \phi 131.5$	1
5	M11-103	Ball 4S070-4SF099	1
6	M33-105	Outer house 4SF060-4SF079	1
7	M37-105	Inner house 4S070Z	1
8	M39-105	Hanger $\phi 70$	1
9	M41-110	Omløber $\phi 70\text{mm}$	1
10	M41-510	5mm delrin ball	124
11	O-ring	$\phi 110 \times 2.5$	1
12	Platic hub	Plastic innerligner 70 x 1mm plate	1

DWG NR / NAME:

**4SF070H / S-A top roller bearing with hanger**

PROJECT:

Shaft  $\phi 70\text{mm}$ . Max working load 4900kg

DATE:

11.01.2012

NAME:

JR

SCALE / PAPER:

1:6 / A4

MATERIAL:

WEIGHT:

g

LOCATION:

REV:

BATCH NR:

REKV.NR / ORDRE NR:

ORDRE DATO:

LEV.DATO:

*Jefa Rudder*  
SYSTEMS

JEFA MARINE A/S  
NIMBUSVEJ 2  
2670 GREVE, DENMARK

Tlf: +45 4615 5210 & Fax: +45 46155208  
Email: info@jefa.com www.jefa.com

MODIFY DATE:

: /