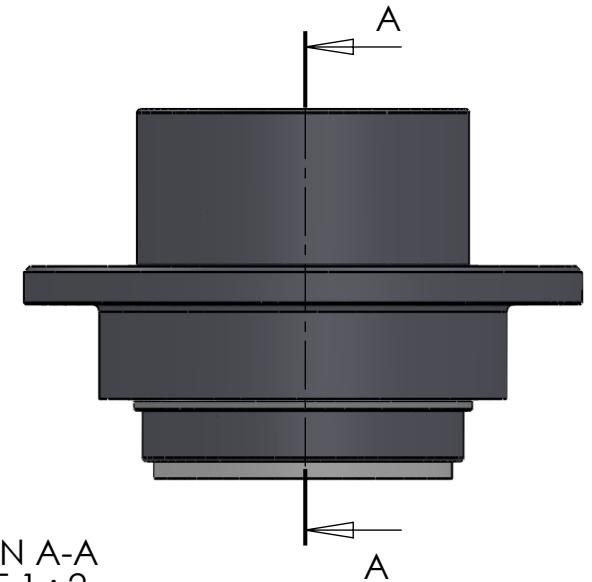


SECTION A-A  
SCALE 1 : 2



ITEM NO.	PART NUMBER	PART NAME	QTY.
1	M33-101	Outer house 4SF040-4SF059	1
2	M11-101	Ball 4SF040-4SF059	1
3	O-ring	ø90 x 2,5	1
4	M03-195	Delrin Lockring ø68,5 x ø51 x 1,75mm	2
5	M05-125	L-ring ø49 x ø51.5 ø65	2
6	M01-201	Roller ø8 x 44mm	22
7	M35-101	Inner house 4SF040-4SF049	1
8	O-ring	ø75 x 2,5mm	1
9	M09-101	Alu lockring ø80.5 x ø89.5	1
10	M07-113	Washer ø49.5 x ø79	1

DWG NR / NAME: <b>4SF049 / S-A top roller bearing</b>				BATCH NR:	
PROJECT: Shaft Ø49mm, max working load 2100kg				REKV.NR / ORDRE NR:	
DATE: 20-01-2011	NAME: JR	SCALE / PAPER: 1:2.5 / A4	MATERIAL: g	LOCATION:	ORDRE DATO:
MODIFY DATE: : /			WEIGHT: g	REV:	LEV.DATO:

*Jefa Rudder*  
S Y S T E M S

JEFA MARINE A/S  
NIMBUSVEJ 2  
2670 GREVE, DENMARK  
Tlf: +45 4615 5210 & Fax: +45 46155208  
Email: info@jefa.com www.jefa.com