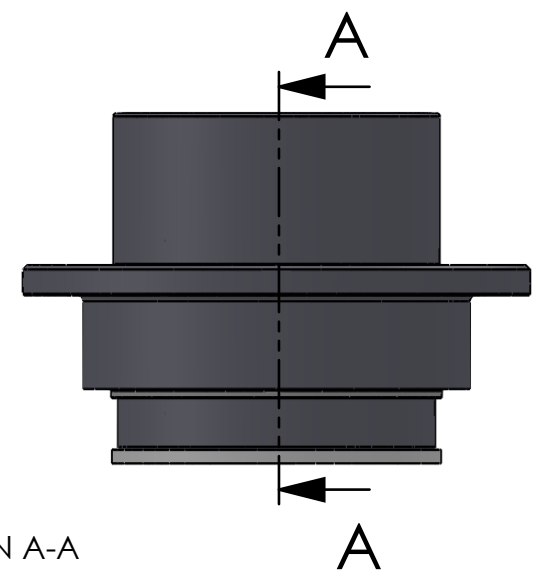



SECTION A-A
SCALE 1 : 2.5



ITEM NO.	PART NUMBER	PART NAME	QTY.
1	M33-105	Outer house 4SF060-4SF079	1
2	M11-103	Ball 4SF060-4SF079	1
3	O-ring	ø100 x 2.5mm	1
4	M03-213	Delrin Lockring ø98,5 x ø81 x 1,75mm	2
5	M05-182	L-ring, delrin ø75 x ø95 x 7,5mm	2
6	M01-340	Roller ø10.5 x 57mm	25
7	M35-107	Inner house 4SF070-4SF079	1
8	O-ring	ø90 x 2,5mm	1
9	M09-105	Alu lockring ø100,5 x ø109,5	1
10	M07-152	Washer, delrin ø75,5 x ø109 x 4,5mm	1

DWG NR / NAME:		4SF074 / S-A top roller bearing		BATCH NR:	
PROJECT:		Shaft Ø74mm, max working load 4900kg		REKV.NR / ORDRE NR:	
DATE:	NAME:	SCALE / PAPER:	MATERIAL:	LOCATION:	ORDRE DATO:
20-01-2011	JR	1:10 / A4	WEIGHT: g		
MODIFY DATE:				REV:	LEV.DATO:
: /					



Jefa Rudder
SYSTEMS

JEFA MARINE A/S
NIMBUSVEJ 2
2670 GREVE. DENMARK
Tlf: +45 4615 5210 & Fax: +45 46155208
Email: info@jefa.com www.jefa.com