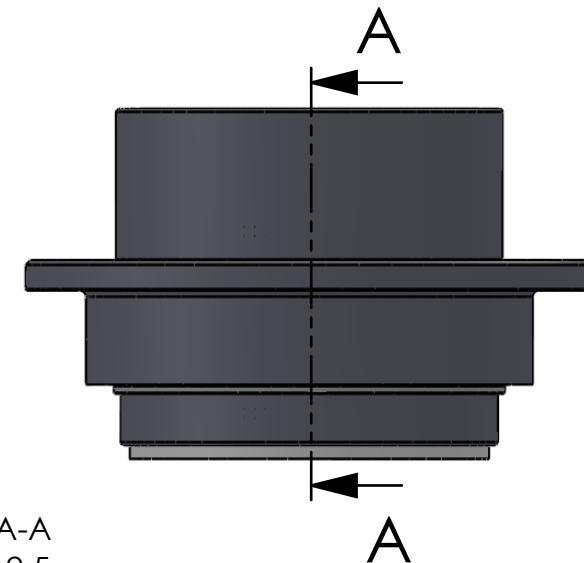


SECTION A-A
SCALE 1 : 2.5



ITEM NO.	PART NUMBER	PART NAME	QTY.
1	M33-110	Outer house 4SF080-4SF099	1
2	M11-105	Ball 4S080-4SF099	1
3	O-ring	$\varnothing 130 \times 2.5$	1
4	M03-220	Delrin Lockring $\varnothing 108,5 \times \varnothing 91 \times 1,75\text{mm}$	2
5	M05-194	L-ring $\varnothing 84 \varnothing 87.5 \varnothing 105$	2
6	M01-356	Roller $\varnothing 11.5 \times 57\text{mm}$	25
7	M35-109	Inner house 4S080-4S089	1
8	O-ring	$\varnothing 120 \times 2.5$	1
9	M09-110	Alu lockring $\varnothing 120.5 \times \varnothing 129.5$	1
10	M07-162	Washer $\varnothing 82.5 \varnothing 119$	1

DWG NR / NAME:

4SF082 / S-A top roller bearing

BATCH NR:

PROJECT:

Shaft $\varnothing 82\text{mm}$, max working load 5600kg

REKV.NR / ORDRE NR:

DATE:

20-01-2011

NAME:

JR

SCALE / PAPER:

1:10 / A4

MATERIAL:

WEIGHT: g

LOCATION:

REV:

ORDRE DATO:

LEV.DATO:

MODIFY DATE:

: /

Jefa Rudder
SYSTEMS

JEFA MARINE A/S
NIMBUSVEJ 2
2670 GREVE. DENMARK

Tlf: +45 4615 5210 & Fax: +45 46155208
Email: info@jefa.com www.jefa.com