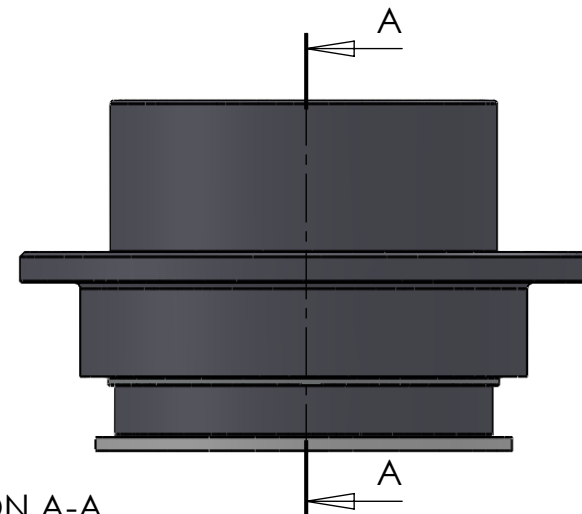


SECTION A-A  
SCALE 1 : 2.5



ITEM NO.	PART NUMBER	PART NAME	QTY.
1	M33-110	Outer house 4SF080-4SF099	1
2	M11-105	Ball 4SF080-4SF099	1
3	O-ring	ø120 x 2.5mm	1
4	M03-228	Delrin Lockring ø118,5 x 101 x 1,75mm	2
5	M05-233	L-ring ø99 ø101.5 ø115	2
6	M01-301	Roller ø8.0 x 57mm	42
7	M35-111	Inner house 4SF090-4SF099	1
8	O-ring	ø115 x 2.5	1
9	M09-110	Alu lockring ø120.5 x ø129.5	1
10	M07-185	Washer ø100.5 ø138	1

DWG NR / NAME:

**4SF099 / S-A top roller bearing**

BATCH NR:

PROJECT:

Shaft Ø99mm, max working load 6200kg

REKV.NR / ORDRE NR:

DATE:

20-01-2011

NAME:

JR

SCALE / PAPER:

1:3.5 / A4

MATERIAL:

WEIGHT: g

LOCATION:

REV:

ORDRE DATO:

LEV.DATO:

MODIFY DATE:

: /

*Jefa Rudder*  
S Y S T E M S

JEFA MARINE A/S  
NIMBUSVEJ 2  
2670 GREVE. DENMARK

Tlf: +45 4615 5210 & Fax: +45 46155208  
Email: info@jefa.com www.jefa.com