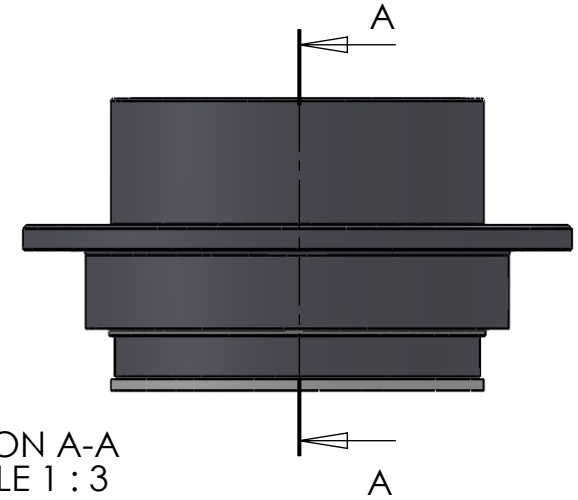


SECTION A-A  
SCALE 1 : 3



ITEM NO.	PART NUMBER	PART NAME	QTY.
1	M33-115	Outer house 4SF100-4SF119	1
2	M11-107	Ball 4SF100-4SF119	1
3	O-ring	$\phi 140 \times 2.5\text{mm}$	1
4	M03-235	Delrin Lockring $\phi 128,5 \times \phi 111 \times 1,75\text{mm}$	2
5	M05-266	L-ring $\phi 109 \phi 111.5 \phi 125$	2
6	M01-308	Roller $\phi 8.5 \times 57\text{mm}$	42
7	M35-113	Inner house 4SF100-4SF109	1
8	O-ring	$\phi 130 \times 2.5\text{mm}$	1
9	M09-115	Alu lockring $\phi 140.5 \times \phi 149.5$	1
10	M07-194	Washer $\phi 108.5 \phi 148$	1

DWG NR / NAME: **4SF108 / S-A top roller bearing**

BATCH NR:

PROJECT:  
Shaft  $\phi 108\text{mm}$ , max working load 6800kg

REKV.NR / ORDRE NR:

DATE:  
20-01-2011

NAME:  
JR

SCALE / PAPER:  
1:4 / A4

MATERIAL:  
WEIGHT: g

LOCATION:

ORDRE DATO:

MODIFY DATE:

REV:

LEV.DATO:

: /

*Jefa Rudder*  
SYSTEMS

JEFA MARINE A/S  
NIMBUSVEJ 2  
2670 GREVE. DENMARK  
Tlf: +45 4615 5210 & Fax: +45 46155208  
Email: info@jefa.com www.jefa.com