

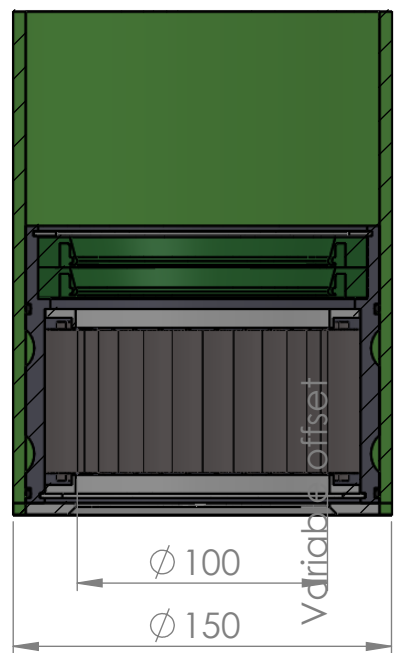
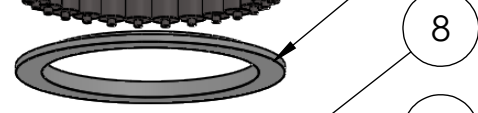
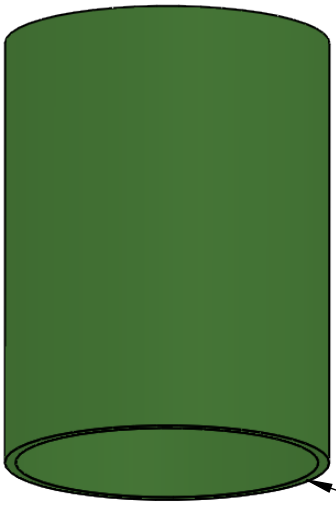
A

B

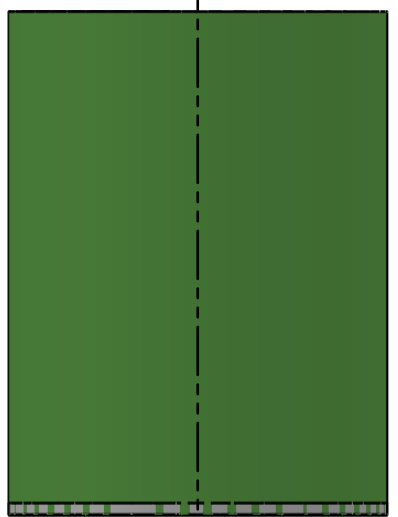
C

D

E



SECTION A-A  
SCALE 1 : 3



ITEM NO.	PART NUMBER	PART NAME	QTY.
1	GRP-TUBE-Ø150	GRP tube Ø150 x Ø140	1
2	M03-270	Delrin Lockring ø133,5 x ø116 x 1,75mm	1
3	PUR100130	PUR Lip seal 100x130x12mm	2
4	O-ring	ø130 x 2.5	2
5	M49-294	House for 6S100-6S109	1
6	M01-372	Roller ø12.5 x 57mm	28
7	M05-245	L-ring ø100 ø103.5 ø125	2
8	M03-235	Delrin Lockring ø128,5 x ø111 x 1,75mm	1
9	M07-185-B	Washer, delrin ø100,5 x ø150 x 4,5mm	1

DWG NR / NAME:

**61100S150 / GRP bottom roller bearing**

BATCH NR:

PROJECT:  
Shaft Ø100mm, max working load 4900-6200kg

REKV.NR / ORDRE NR:

DATE:  
08.06.2016

NAME:  
JR

SCALE / PAPER:  
1:3 / A4

MATERIAL:  
WEIGHT: g

LOCATION:

ORDRE DATO:

MODIFY DATE:  
: /

REV:

LEV.DATO:



JEFA MARINE A/S  
NIMBUSVEJ 2  
2670 GREVE, DENMARK

Tlf: +45 4615 5210 & Fax: +45 46155208  
Email: info@jefa.com www.jefa.com