

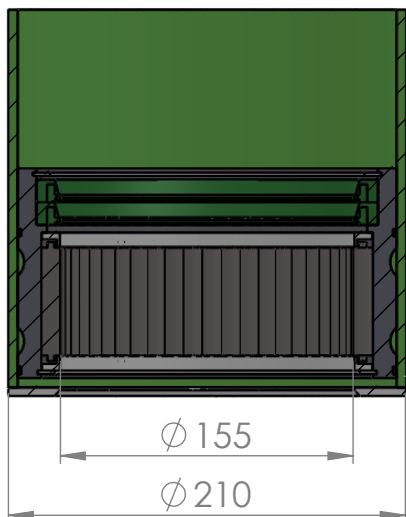
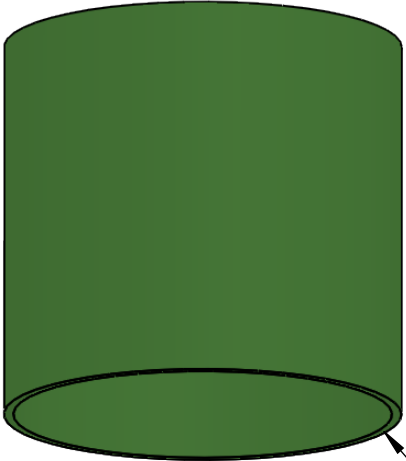
A

B

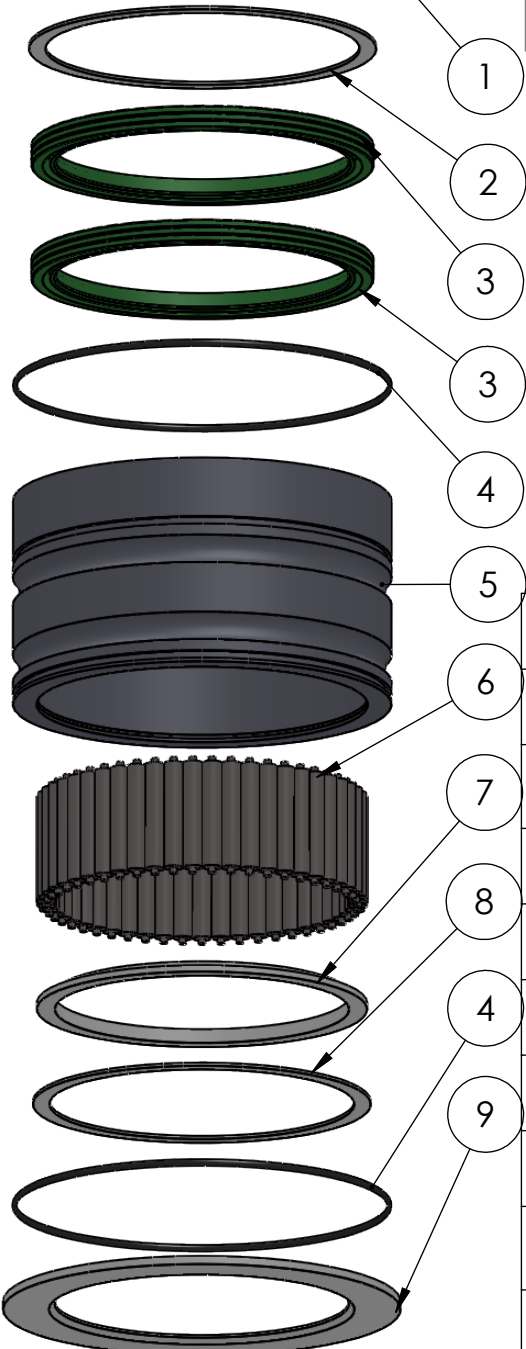
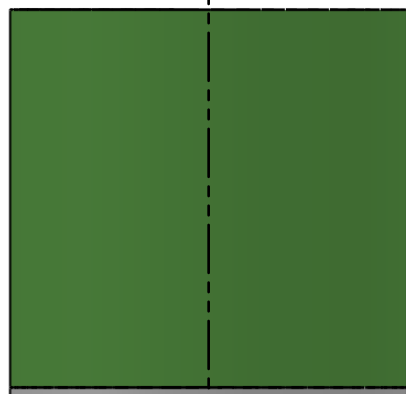
C

D

E



SECTION A-A
SCALE 1 : 4



ITEM NO.	PART NUMBER	PART NAME	QTY.
1	GRP-TUBE-Ø210	GRP tube Ø210 x Ø200	1
2	M03-320	Delrin Lockring ø183,5 x ø166 x 1,75mm	1
3	PUR156180	PUR Lip seal 156x180x12mm	2
4	O-ring	ø190 x 2.5	2
5	M49-335	House for 6S150-6S159	1
6	M01-332	Roller ø10.0 x 57mm	51
7	M05-353	L-ring ø155 ø158 ø175	2
8	M03-315	Delrin Lockring ø178,5 x ø161 x 1,75mm	1
9	M07-232-D	Washer, delrin ø155,5 x ø210 x 4,5mm	1

DWG NR / NAME:

61155S210 / GRP bottom roller bearing

BATCH NR:

PROJECT:
Shaft Ø155mm, max working load 8400-9500kg

REKV.NR / ORDRE NR:

DATE:
16.06.2016

NAME:
JR

SCALE / PAPER:
1:4 / A4

MATERIAL:
WEIGHT: g

LOCATION:

ORDRE DATO:

MODIFY DATE:
: /

REV:

LEV.DATO:



JEFA MARINE A/S
NIMBUSVEJ 2
2670 GREVE, DENMARK

Tlf: +45 4615 5210 & Fax: +45 4615208
Email: info@jefa.com www.jefa.com