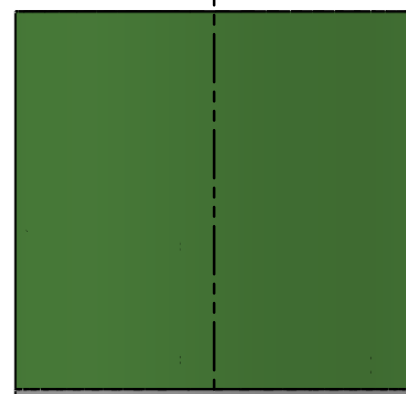


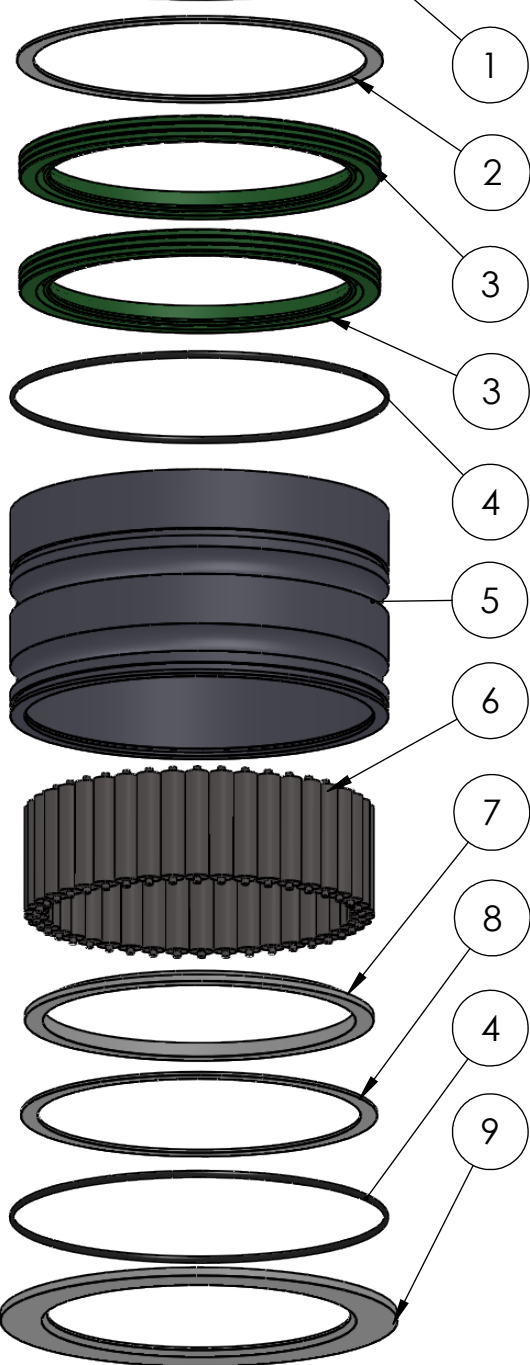
Variable offset
Variable length

SECTION A-A
SCALE 1 : 4



A

A



| ITEM NO. | PART NUMBER | PART NAME | QTY. |
|----------|---------------|--|------|
| 1 | GRP-TUBE-Ø210 | GRP tube Ø210 x Ø200 | 1 |
| 2 | M03-330 | Delrin Lockring ø193,5 x ø176 x 1,75mm | 1 |
| 3 | PUR160190 | PUR Lip seal 160x190x12mm | 2 |
| 4 | O-ring | ø190 x 2.5 | 2 |
| 5 | M49-345 | House for 6S160-6S169 | 1 |
| 6 | M01-372 | Roller ø12.5 x 57mm | 42 |
| 7 | M05-365 | L-ring ø165 ø168.5 ø185 | 2 |
| 8 | M03-325 | Delrin Lockring ø188,5 x ø171 x 1,75mm | 1 |
| 9 | M07-237 | Washer, delrin ø160,5 x ø210 x 4,5mm | 1 |

DWG NR / NAME:

61160S210 / GRP bottom roller bearing

BATCH NR:

PROJECT:

Shaft Ø160mm, max working load 8400-9500kg

REKV.NR / ORDRE NR:

DATE:

16.06.2016

NAME:

JR

SCALE / PAPER:

1:4 / A4

MATERIAL:

WEIGHT:

g

LOCATION:

REV:

ORDRE DATO:

LEV.DATO:

MODIFY DATE:

: /

Jefa Rudder
SYSTEMS

JEFA MARINE A/S
NIMBUSVEJ 2
2670 GREVE, DENMARK

Tlf: +45 4615 5210 & Fax: +45 4615 5208
Email: info@jefa.com www.jefa.com