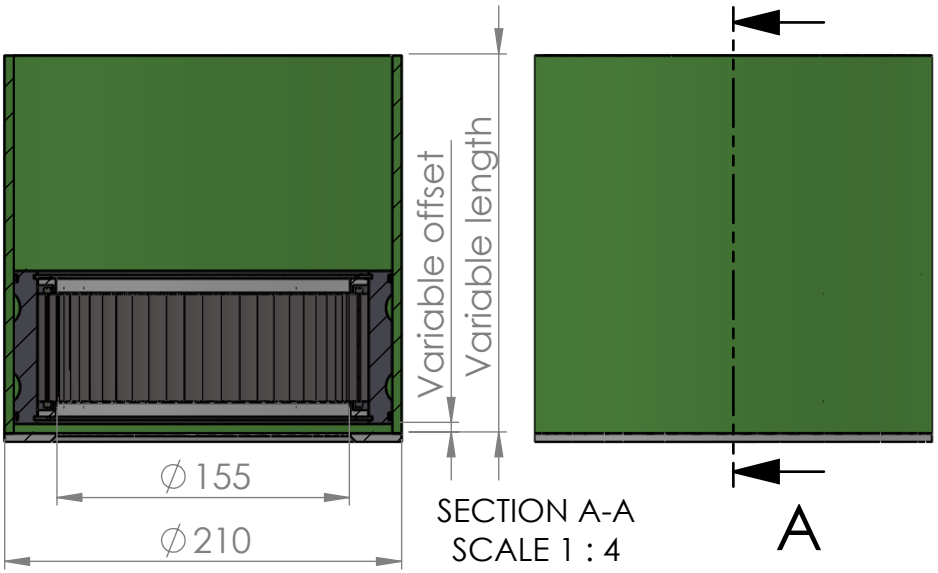
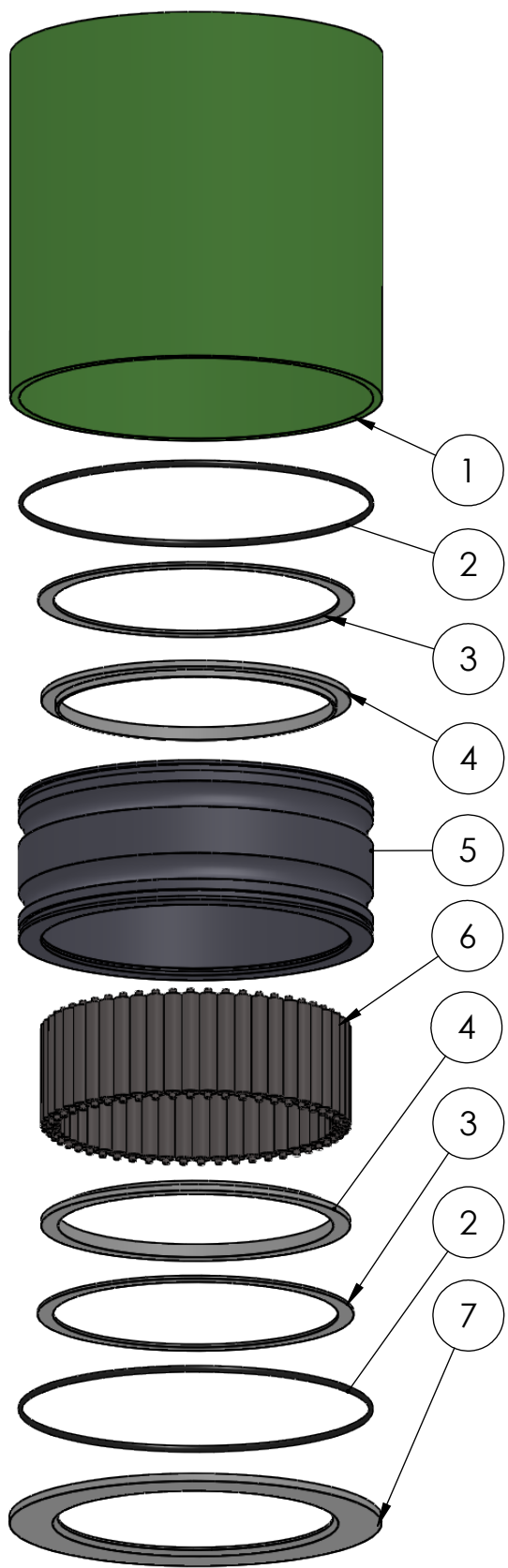


A
B
C
D
E



| ITEM NO. | PART NUMBER | PART NAME | QTY. |
|----------|---------------|--|------|
| 1 | GRP-TUBE-Ø210 | GRP tube Ø210 x Ø200 | 1 |
| 2 | O-ring | ø190 x 2.5 | 2 |
| 3 | M03-315 | Delrin Lockring ø178,5 x ø161 x 1,75mm | 2 |
| 4 | M05-353 | L-ring ø155 ø158 ø175 | 2 |
| 5 | M49-330 | House for 6S150-6S159 | 1 |
| 6 | M01-332 | Roller ø10.0 x 57mm | 52 |
| 7 | M07-232-D | Washer, delrin ø155,5 x ø210 x 4,5mm | 1 |

DWG NR / NAME:

61155210 / GRP bottom roller bearing

BATCH NR:

PROJECT:
SHaft Ø155mm, max working load 8100-10100kg

REKV.NR / ORDRE NR:

DATE:
29.03.2016

NAME:
JR

SCALE / PAPER:
1:4 / A4

MATERIAL:
WEIGHT: g

LOCATION:

ORDRE DATO:

MODIFY DATE:
: /

REV:

LEV.DATO:



JEFA MARINE A/S
NIMBUSVEJ 2
2670 GREVE, DENMARK

Tlf: +45 4615 5210 & Fax: +45 46155208
Email: info@jefa.com www.jefa.com