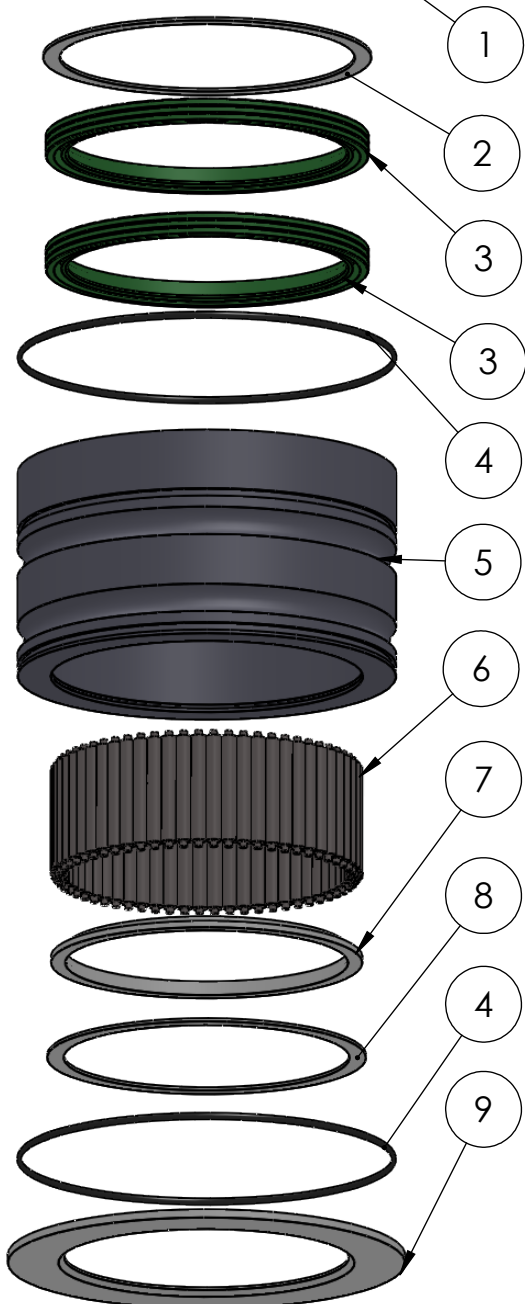
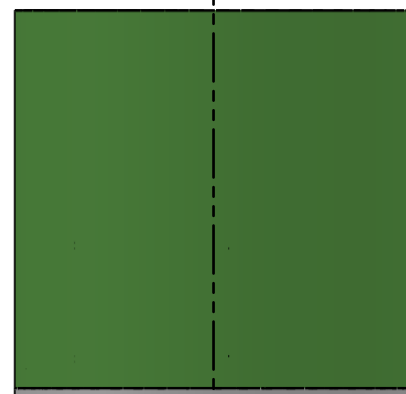


SECTION A-A  
SCALE 1 : 4



ITEM NO.	PART NUMBER	PART NAME	QTY.
1	GRP-TUBE-Ø210	GRP tube Ø210 x Ø200	1
2	M03-310	Delrin Lockring ø173,5 x ø156 x 1,75mm	1
3	PUR149170	PUR Lip seal 149x170x12mm	2
4	O-ring	ø190 x 2.5	2
5	M49-325	House for 6S140-6S149	1
6	M01-301	Roller ø8.0 x 57mm	62
7	M05-344	L-ring ø149 ø151.5 ø165	2
8	M03-305	Delrin Lockring ø168,5 x ø151 x 1,75mm	1
9	M07-232-B	Washer, delrin ø150,5 x ø210 x 4,5mm	1

DWG NR / NAME:

**61149S210 / GRP bottom roller bearing**

BATCH NR:

PROJECT:

Shaft Ø149mm, max working load 8400-9500kg

REKV.NR / ORDRE NR:

DATE:

15.06.2016

NAME:

JR

SCALE / PAPER:

1:4 / A4

MATERIAL:

WEIGHT:

g

LOCATION:

REV:

ORDRE DATO:

LEV.DATO:

MODIFY DATE:

: /

*Jefa Rudder*  
SYSTEMS

JEFA MARINE A/S  
NIMBUSVEJ 2  
2670 GREVE, DENMARK

Tlf: +45 4615 5210 & Fax: +45 4615 5208  
Email: info@jefa.com www.jefa.com