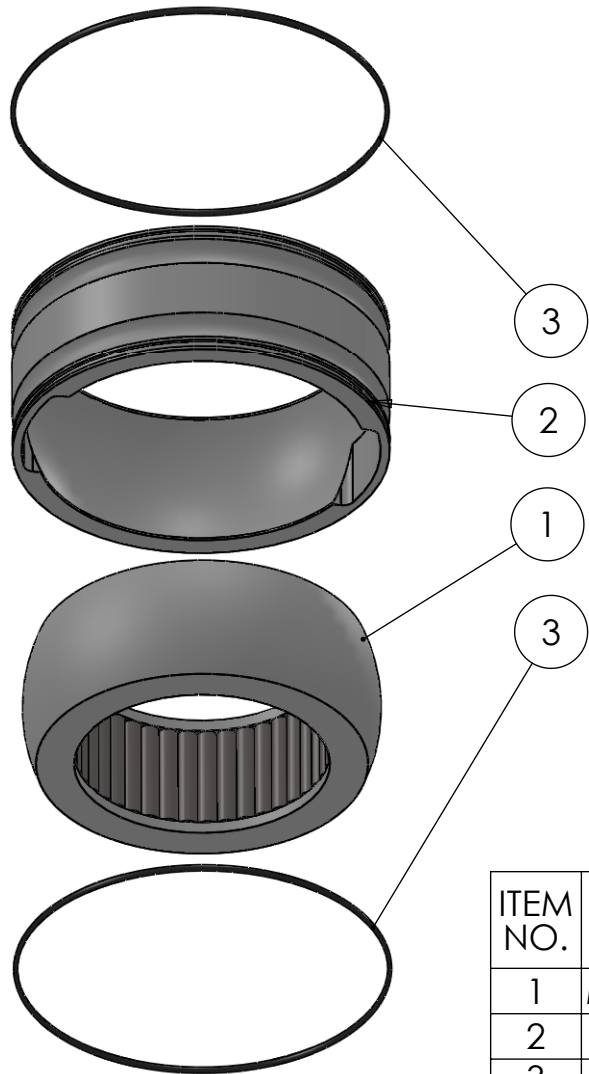


SECTION A-A  
SCALE 1 : 2.5



| ITEM NO. | PART NUMBER | PART NAME  | Default/ QTY. |
|----------|-------------|--|---------------|
| 1        | M13-545-134 | Ball with rollers  | 1             |
| 2        | M48-180     | House $\varnothing 200\text{mm}$ for $\varnothing 190\text{mm}$ ball | 1             |
| 3        | O-ring      | $\varnothing 198 \times 2.5$   | 2             |

DWG NR / NAME: 6BB200134 / S-A bottom Roller bearing

PROJECT: Shaft  $\varnothing 134\text{mm}$

|                     |             |                            |                        |           |
|---------------------|-------------|----------------------------|------------------------|-----------|
| DATE:<br>31.01.2012 | NAME:<br>JR | SCALE / PAPER:<br>1:4 / A4 | MATERIAL:<br>WEIGHT: g | LOCATION: |
| MODIFY DATE:<br>: / |             |                            |                        | REV:      |

|                     |
|---------------------|
| BATCH NR:           |
| REKV.NR / ORDRE NR: |
| ORDRE DATO:         |
| LEV.DATO:           |

*Jefa Rudder*  
SYSTEMS

JEFA MARINE A/S  
NIMBUSVEJ 2  
2670 GREVE, DENMARK

Tlf: +45 4615 5210 & Fax: +45 46155208  
Email: info@jefa.com www.jefa.com