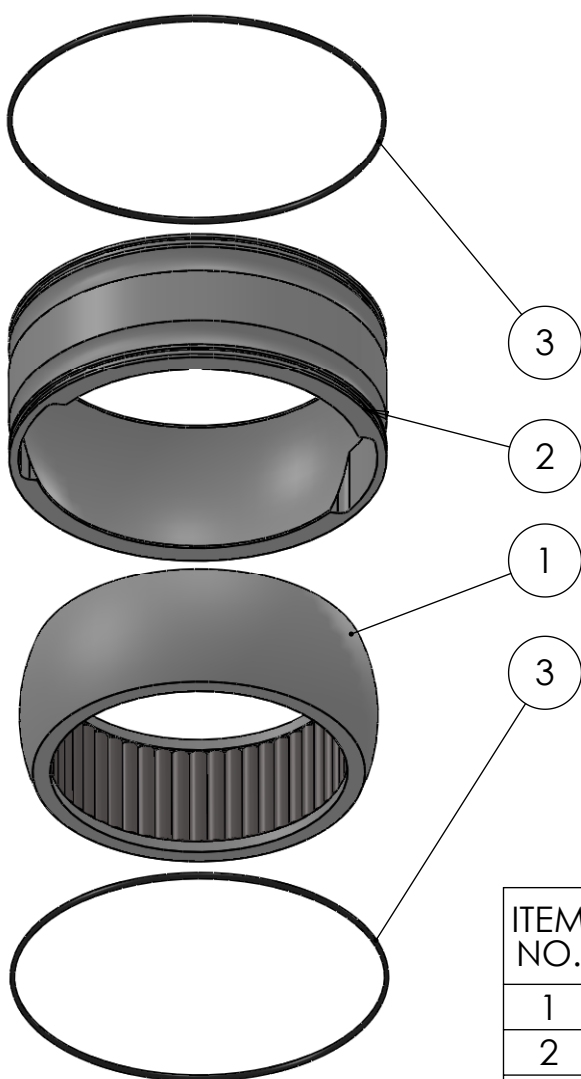


SECTION A-A
SCALE 1 : 2.5



| ITEM NO. | PART NUMBER | PART NAME | Default/ QTY. |
|----------|-------------|------------------------------|---------------|
| 1 | M13-565-157 | Ball with rollers | 1 |
| 2 | M48-180 | House ø200mm for ø190mm ball | 1 |
| 3 | O-ring | ø198 x 2.5 | 2 |

DWG NR / NAME: 6BB200157 / S-A bottom Roller bearing

PROJECT: Shaft ø157mm

| | | | | |
|---------------------|-------------|----------------------------|------------------------|-----------|
| DATE: 31.01.2012 | NAME: JR | SCALE / PAPER: 1:4 / A4 | MATERIAL: WEIGHT: g | LOCATION: |
| MODIFY DATE: : / | | | | REV: |

| |
|---------------------|
| BATCH NR: |
| REKV.NR / ORDRE NR: |
| ORDRE DATO: |
| LEV.DATO: |

Jefa Rudder
SYSTEMS

JEFA MARINE A/S
NIMBUSVEJ 2
2670 GREVE, DENMARK

Tlf: +45 4615 5210 & Fax: +45 4615208
Email: info@jefa.com www.jefa.com