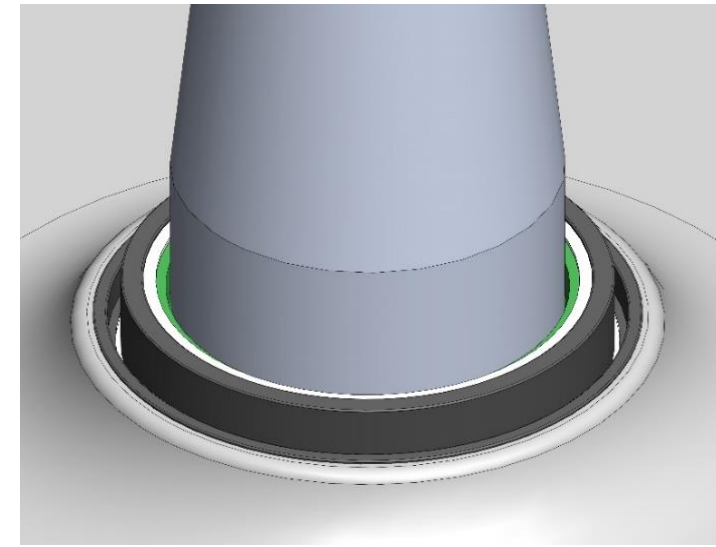
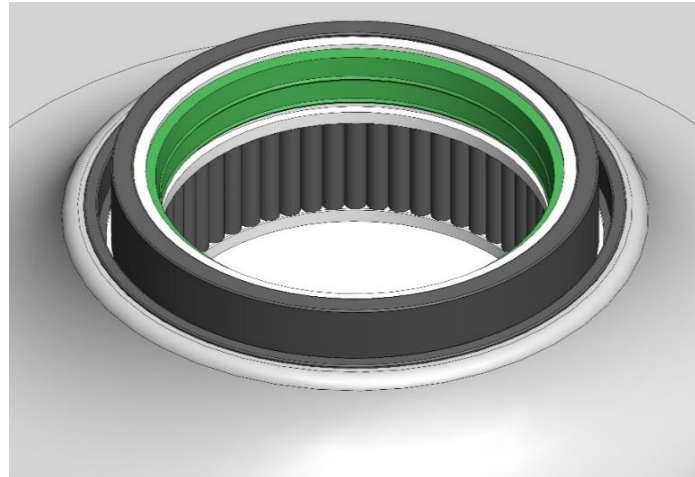
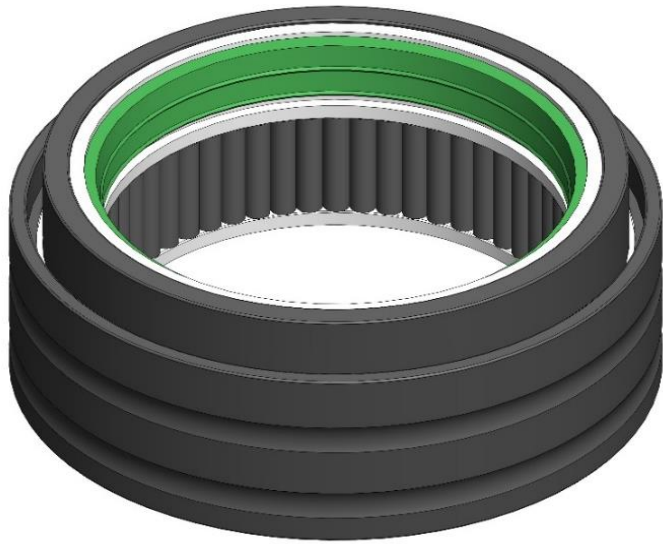


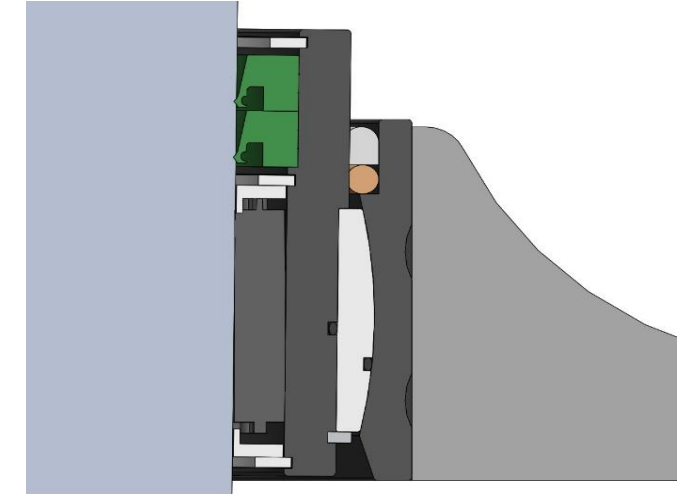
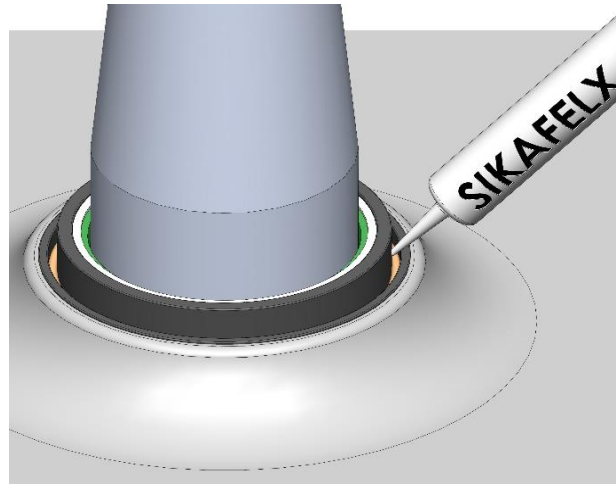
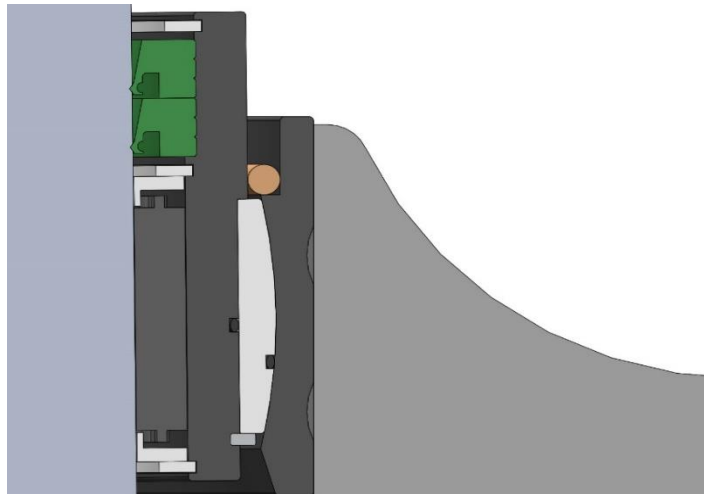
Sealing manual for large 4S000 bearings



1. On the bigger size 4S serie bearing where there isn't mounted a tube on the outer house, it is a good idea to make a extra seal over the bearing ball.

2. First mount the 4S bearing in the hull. (more information about this on our website jefa.com/install/install.htm).

3. Place the rudder stock thru the bearing and fasten it to the top bearing so it get locked in the correct angle.



4. Place a flexible distance material (Orange on the picture) in the groove above the bearing ball.

5. Use Sikaflex 221 or 291 on top of the distance material to seal the bearing.

The finish should look like the picture above. When sealed the rudder can still move $\pm 1^\circ$.

In case of any doubt please contact Jefa Marine via Info@jefa.com
Rev. 1 - 12/9-2018

Jefa Marine A/S
Nimbusvej 2
2670 Greve
Denmark

Phone +45 4515 5210
Fax +45 4369 5208
Email: info@jefa.com
www.jefa.com/rudder.htm

Jefa Rudder
S Y S T E M S