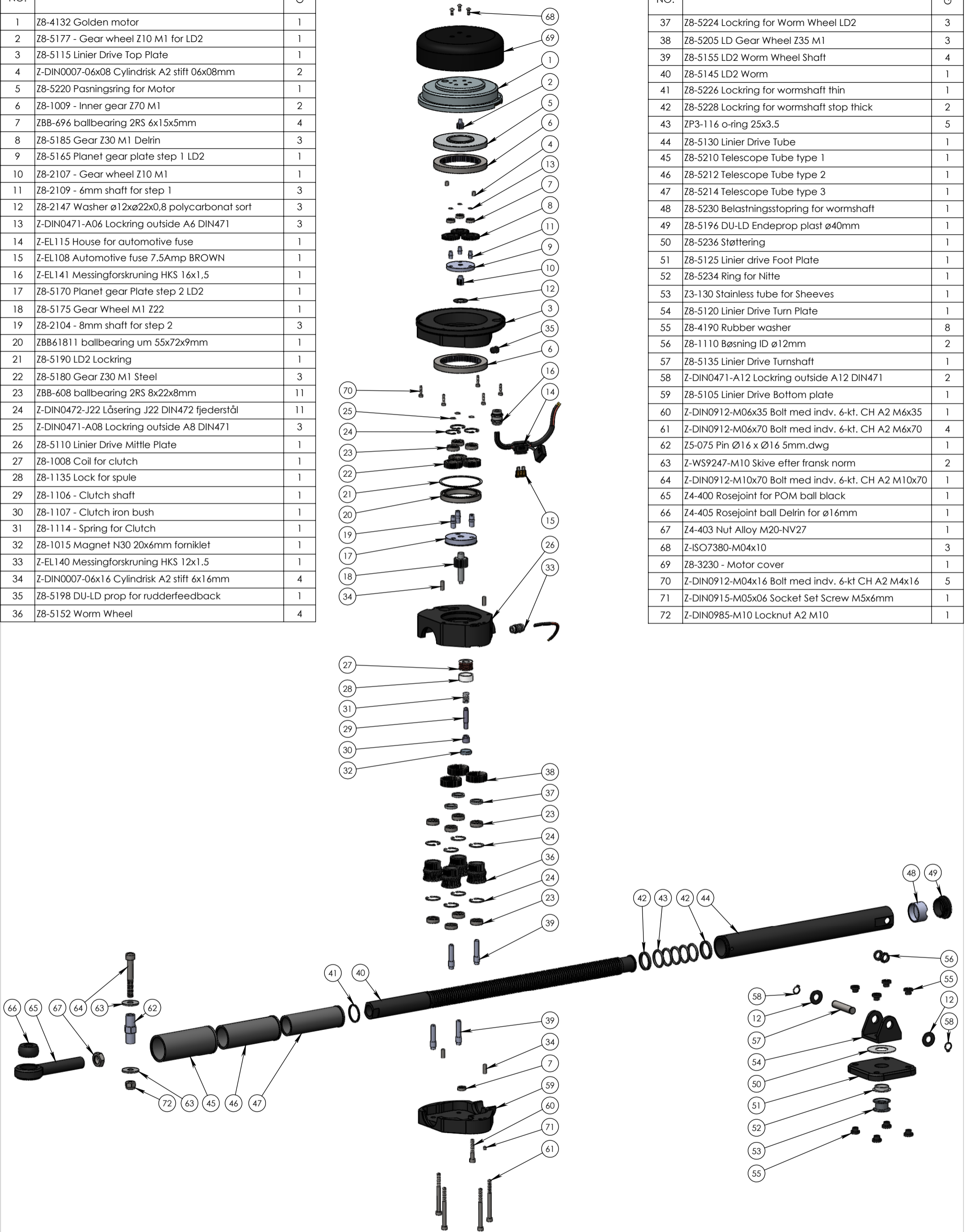


ITEM NO.	PART NUMBER	QTY.
1	Z8-4132 Golden motor	1
2	Z8-5177 - Gear wheel Z10 M1 for LD2	1
3	Z8-5115 Linier Drive Top Plate	1
4	Z-DIN0007-06x08 Cylindrisk A2 stift 06x08mm	2
5	Z8-5220 Pasningsring for Motor	1
6	Z8-1009 - Inner gear Z70 M1	2
7	ZBB-696 ballbearing 2RS 6x15x5mm	4
8	Z8-5185 Gear Z30 M1 Delrin	3
9	Z8-5165 Planet gear plate step 1 LD2	1
10	Z8-2107 - Gear wheel Z10 M1	1
11	Z8-2109 - 6mm shaft for step 1	3
12	Z8-2147 Washer $\varnothing 12 \times \varnothing 22 \times 0,8$ polycarbonat sort	3
13	Z-DIN0471-A06 Lockring outside A6 DIN471	3
14	Z-EL115 House for automotive fuse	1
15	Z-EL108 Automotive fuse 7.5Amp BROWN	1
16	Z-EL141 Messingforskruning HKS 16x1,5	1
17	Z8-5170 Planet gear Plate step 2 LD2	1
18	Z8-5175 Gear Wheel M1 Z22	1
19	Z8-2104 - 8mm shaft for step 2	3
20	ZBB61811 ballbearing um 55x72x9mm	1
21	Z8-5190 LD2 Lockring	1
22	Z8-5180 Gear Z30 M1 Steel	3
23	ZBB-608 ballbearing 2RS 8x22x8mm	11
24	Z-DIN0472-J22 Låserring J22 DIN472 fjederstål	11
25	Z-DIN0471-A08 Lockring outside A8 DIN471	3
26	Z8-5110 Linier Drive Miffle Plate	1
27	Z8-1008 Coil for clutch	1
28	Z8-1135 Lock for spule	1
29	Z8-1106 - Clutch shaft	1
30	Z8-1107 - Clutch iron bush	1
31	Z8-1114 - Spring for Clutch	1
32	Z8-1015 Magnet N30 20x6mm forniklet	1
33	Z-EL140 Messingforskruning HKS 12x1,5	1
34	Z-DIN0007-06x16 Cylindrisk A2 stift 6x16mm	4
35	Z8-5198 DU-LD prop for rudderfeedback	1
36	Z8-5152 Worm Wheel	4

ITEM NO.	PART NUMBER	QTY.
37	Z8-5224 Lockring for Worm Wheel LD2	3
38	Z8-5205 LD Gear Wheel Z35 M1	3
39	Z8-5155 LD2 Worm Wheel Shaft	4
40	Z8-5145 LD2 Worm	1
41	Z8-5226 Lockring for wormshaft thin	1
42	Z8-5228 Lockring for wormshaft stop thick	2
43	ZP3-116 o-ring 25x3,5	5
44	Z8-5130 Linier Drive Tube	1
45	Z8-5210 Telescope Tube type 1	1
46	Z8-5212 Telescope Tube type 2	1
47	Z8-5214 Telescope Tube type 3	1
48	Z8-5230 Belastningsstopping for wormshaft	1
49	Z8-5196 DU-LD Endeprop plast $\varnothing 40$ mm	1
50	Z8-5236 Støttering	1
51	Z8-5125 Linier drive Foot Plate	1
52	Z8-5234 Ring for Nitte	1
53	Z3-130 Stainless tube for Sheeves	1
54	Z8-5120 Linier Drive Turn Plate	1
55	Z8-4190 Rubber washer	8
56	Z8-1110 Bøsning ID $\varnothing 12$ mm	2
57	Z8-5135 Linier Drive Turnshaft	1
58	Z-DIN0471-A12 Lockring outside A12 DIN471	2
59	Z8-5105 Linier Drive Bottom plate	1
60	Z-DIN0912-M06x35 Bolt med indiv. 6-kt. CH A2 M6x35	1
61	Z-DIN0912-M06x70 Bolt med indiv. 6-kt. CH A2 M6x70	4
62	Z5-075 Pin $\varnothing 16 \times \varnothing 16$ 5mm.dwg	1
63	Z-WS9247-M10 Skive efter fransk norm	2
64	Z-DIN0912-M10x70 Bolt med indiv. 6-kt. CH A2 M10x70	1
65	Z4-400 Rosejoint for POM ball black	1
66	Z4-405 Rosejoint ball Delrin for $\varnothing 16$ mm	1
67	Z4-403 Nut Alloy M20-NV27	1
68	Z-ISO7380-M04x10	3
69	Z8-3230 - Motor cover	1
70	Z-DIN0912-M04x16 Bolt med indiv. 6-kt CH A2 M4x16	5
71	Z-DIN0915-M05x06 Socket Set Screw M5x6mm	1
72	Z-DIN0985-M10 Locknut A2 M10	1



DWG NR / NAME: LD12 / Autopilot drive exploded view

PROJECT: Linier drive 12V

DATE: 02-02-2009

NAME: KJ

SCALE / PAPER: 1:6 / A3

MATERIAL: g

LOCATION:

BATCH NR:

REKV.NR / ORDRE NR:

ORDRE DATO:

LEV.DATO:



JEFA STEERING ApS
 AGENAVEJ 43
 2670 GREVE, DENMARK
 Tlf: +45 4615 5210 & Fax: +45 4369 5211
 Email: info@jefa.com www.jefa.com